

\$609,250 - 20 Springbrook Wynd, Spruce Grove

MLS® #E4426092

\$609,250

4 Bedroom, 4.00 Bathroom, 2,153 sqft

Single Family on 0.00 Acres

Spruce Ridge, Spruce Grove, AB

The Atlas home boasts 2152 square feet of contemporary living space, perfect for modern families. The home features a double attached garage, 9' ceilings, and stylish Luxury Vinyl Plank Flooring throughout. As you enter, you'll find a welcoming foyer that leads to a convenient mudroom and a 3-piece bathroom. The main level also includes a bedroom and an open-concept design that seamlessly connects the kitchen, great room, and a cozy nook. The kitchen is a chef's dream, featuring quartz countertops, a centre island, and plenty of cabinet space. The great room is perfect for entertaining, with a stunning fireplace and soaring 18' ceilings. Upstairs, you'll discover two luxurious primary suites, each with its own walk-in closet and ensuite bathroom. Additionally, there is a versatile bonus room, a main bathroom, a laundry room, and another bedroom. The home also includes upgraded fixtures and rough-in plumbing for added convenience. Note that appliances are not included

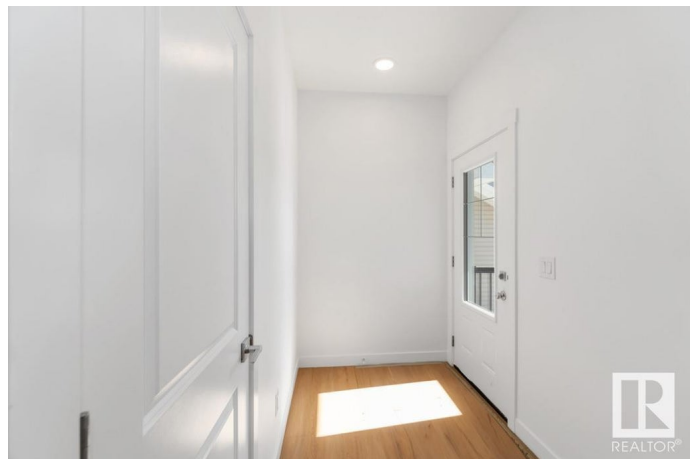
Built in 2025

Essential Information

MLS® # E4426092

Price \$609,250

Bedrooms 4



Bathrooms	4.00
Full Baths	4
Square Footage	2,153
Acres	0.00
Year Built	2025
Type	Single Family
Sub-Type	Detached Single Family
Style	2 Storey
Status	Active

Community Information

Address	20 Springbrook Wynd
Area	Spruce Grove
Subdivision	Spruce Ridge
City	Spruce Grove
County	ALBERTA
Province	AB
Postal Code	T7X 2W5

Amenities

Amenities	On Street Parking, Closet Organizers, Detectors Smoke, Vinyl Windows, Green Building, 9 ft. Basement Ceiling
Parking	Double Garage Attached

Interior

Interior Features	ensuite bathroom
Appliances	Garage Control, Garage Opener
Heating	Forced Air-1, Natural Gas
Fireplace	Yes
Fireplaces	Stone Facing
Stories	2
Has Basement	Yes
Basement	Full, Unfinished

Exterior

Exterior	Wood, Vinyl
Exterior Features	Flat Site, No Back Lane, No Through Road, Not Landscaped, Playground Nearby, Schools, Shopping Nearby
Roof	Asphalt Shingles

Construction	Wood, Vinyl
Foundation	Concrete Perimeter

School Information

Elementary	Copperhaven School
Middle	Woodhaven Middle School
High	Spruce Grove Composite Hig

Additional Information

Date Listed	March 17th, 2025
Days on Market	47
Zoning	Zone 91

DATA IS DEEMED RELIABLE BUT IS NOT GUARANTEED ACCURATE BY THE REALTORS® ASSOCIATION OF EDMONTON. COPYRIGHT 2025 BY THE REALTORS® ASSOCIATION OF EDMONTON. ALL RIGHTS RESERVED.Trademarks are owned or controlled by the Canadian Real Estate Association (CREA) and identify real estate professionals who are members of CREA (REALTOR®, REALTORS®) and/or the quality of services they provide (MLS®, Multiple Listing Service®)

Listing information last updated on May 3rd, 2025 at 8:02am MDT