

\$299,000 - 123 230 Edwards Drive, Edmonton

MLS® #E4427484

\$299,000

3 Bedroom, 1.50 Bathroom, 1,201 sqft

Condo / Townhouse on 0.00 Acres

Ellerslie, Edmonton, AB

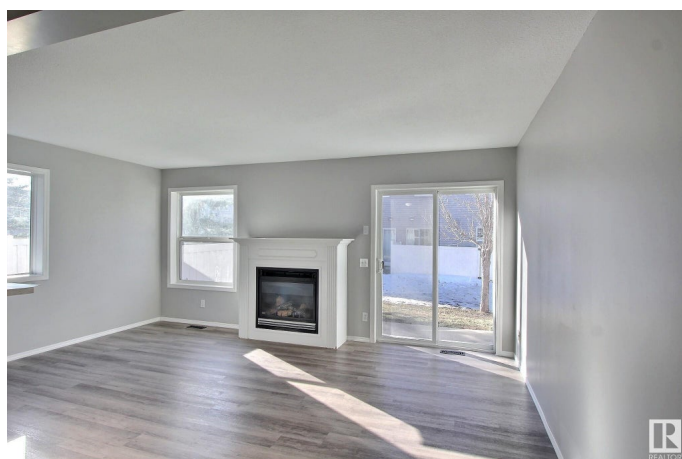
This well-maintained townhome in Stonebridge offers modern design and functionality with an open-concept main floor. Kitchen features maple cabinets and stainless-steel appliances and connects to a living room with gas fireplace and lots of natural light. Upstairs, you'll find three large bedrooms, including a master suite with a walk-in closet. The unfinished basement offers plenty of storage and future development potential. Furnace, HWT and kitchen appliances replaced in 2022.

Additional features include an attached single garage and parking pad for an extra vehicle. Located near Ellerslie Rd, 91st St shopping and dining, and quick access to the Anthony Henday. This home is perfect for a family or investment opportunity. Note virtual staging added to imagine the space.

Built in 2003

Essential Information

MLS® #	E4427484
Price	\$299,000
Bedrooms	3
Bathrooms	1.50
Full Baths	1
Half Baths	1
Square Footage	1,201
Acres	0.00



Year Built	2003
Type	Condo / Townhouse
Sub-Type	Townhouse
Style	2 Storey
Status	Active

Community Information

Address	123 230 Edwards Drive
Area	Edmonton
Subdivision	Ellerslie
City	Edmonton
County	ALBERTA
Province	AB
Postal Code	T6X 1G7

Amenities

Amenities	Parking-Extra, Patio
Parking	Single Garage Attached

Interior

Appliances	Dishwasher-Built-In, Dryer, Hood Fan, Refrigerator, Stove-Electric, Washer
Heating	Forced Air-1, Natural Gas
Stories	2
Has Basement	Yes
Basement	Full, Unfinished

Exterior

Exterior	Wood, Vinyl
Exterior Features	Airport Nearby, No Back Lane, No Through Road, Schools, Shopping Nearby
Roof	Asphalt Shingles
Construction	Wood, Vinyl
Foundation	Concrete Perimeter

Additional Information

Date Listed	March 26th, 2025
Days on Market	38
Zoning	Zone 53

Condo Fee \$335

DATA IS DEEMED RELIABLE BUT IS NOT GUARANTEED ACCURATE BY THE REALTORS® ASSOCIATION OF EDMONTON. COPYRIGHT 2025 BY THE REALTORS® ASSOCIATION OF EDMONTON. ALL RIGHTS RESERVED.Trademarks are owned or controlled by the Canadian Real Estate Association (CREA) and identify real estate professionals who are members of CREA (REALTOR®, REALTORS®) and/or the quality of services they provide (MLS®, Multiple Listing Service®)
Listing information last updated on May 3rd, 2025 at 9:02am MDT