

\$469,900 - 27 Belmont Crescent, Spruce Grove

MLS® #E4429513

\$469,900

5 Bedroom, 2.50 Bathroom, 1,025 sqft
Single Family on 0.00 Acres

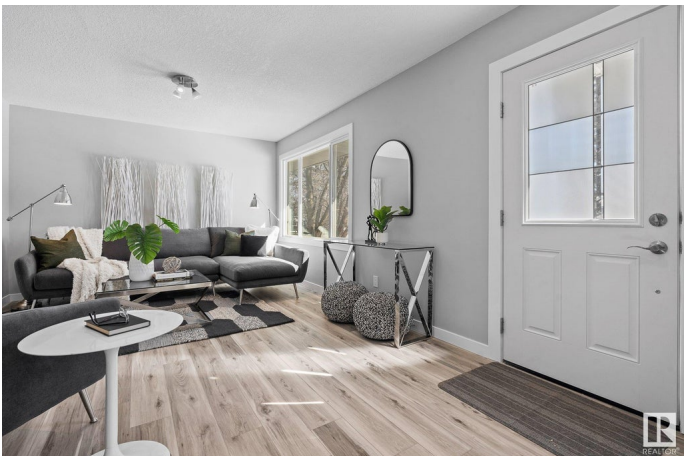
Broxton Park, Spruce Grove, AB

Welcome to this fully renovated, turn-key 5-bed, 2.5-bath home! Thoughtfully updated throughout, this home blends modern style with everyday comfort. The brand-new kitchen shines with sleek cabinets, countertops, and flooring, while the main floor features freshly updated California knockdown ceilings for a bright, modern feel. The fully finished basement with a separate entrance offers endless possibilities. Retreat to the newly renovated primary bath for a touch of luxury. Outside, enjoy a 10x16â€™™ deck (to be completed when weather permits), a double detached garage, and extensive exterior upgrades, including new windows, doors, soffits, and fascia. Plus, a new back sewer backup valve provides added peace of mind. Move-in ready and beautifully upgraded!

Built in 1969

Essential Information

MLS® #	E4429513
Price	\$469,900
Bedrooms	5
Bathrooms	2.50
Full Baths	2
Half Baths	1
Square Footage	1,025
Acres	0.00



Year Built	1969
Type	Single Family
Sub-Type	Detached Single Family
Style	Bungalow
Status	Active

Community Information

Address	27 Belmont Crescent
Area	Spruce Grove
Subdivision	Broxton Park
City	Spruce Grove
County	ALBERTA
Province	AB
Postal Code	T7X 2G3

Amenities

Amenities	Deck, Vinyl Windows
Parking	Double Garage Detached

Interior

Interior Features	ensuite bathroom
Appliances	Dishwasher-Built-In, Dryer, Garage Control, Garage Opener, Microwave Hood Fan, Refrigerator, Stove-Electric, Washer
Heating	Forced Air-1, Natural Gas
Stories	2
Has Basement	Yes
Basement	Full, Finished

Exterior

Exterior	Wood, Stucco
Exterior Features	Back Lane, Backs Onto Park/Trees, Fenced, Golf Nearby, Playground Nearby, Schools, Shopping Nearby
Roof	Asphalt Shingles
Construction	Wood, Stucco
Foundation	Concrete Perimeter

Additional Information

Date Listed	April 7th, 2025
Days on Market	26

Zoning

Zone 91

DATA IS DEEMED RELIABLE BUT IS NOT GUARANTEED ACCURATE BY THE REALTORS® ASSOCIATION OF EDMONTON. COPYRIGHT 2025 BY THE REALTORS® ASSOCIATION OF EDMONTON. ALL RIGHTS RESERVED. Trademarks are owned or controlled by the Canadian Real Estate Association (CREA) and identify real estate professionals who are members of CREA (REALTOR®, REALTORS®) and/or the quality of services they provide (MLS®, Multiple Listing Service®)

Listing information last updated on May 3rd, 2025 at 7:32am MDT