

## \$424,888 - 1349 Keswick Drive, Edmonton

MLS® #E4431338

**\$424,888**

3 Bedroom, 2.50 Bathroom, 1,280 sqft

Single Family on 0.00 Acres

Keswick Area, Edmonton, AB

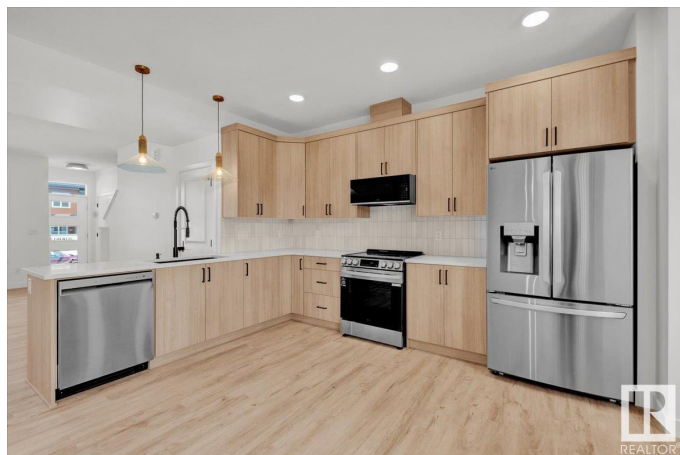
### QUICK POSSESSION & NO CONDO FEES!!

Middle unit of a 4plex townhome in the Keswick community with a detached garage. Enter the home with 9' ceilings on the main floor and easy flow layout. Kitchen features light toned cabinets, 3m quartz countertops, modern finishes and \$3,000 appliance allowance. The upper floor has laundry, 4pc main bath and 3 bedrooms including a primary bedroom with a walk in closet and 4pc ensuite. This home is perfect for starting to build for your future! Close to walking trails, parks and ponds. Under construction possession 35-45 days after removal of conditions. Front & back landscaping included. Photos from a previous build & may differ; interior colors are represented, upgrades may vary appliances not included. HOA TBD.

Built in 2025

### Essential Information

MLS® #	E4431338
Price	\$424,888
Bedrooms	3
Bathrooms	2.50
Full Baths	2
Half Baths	1
Square Footage	1,280
Acres	0.00



Year Built	2025
Type	Single Family
Sub-Type	Residential Attached
Style	2 Storey
Status	Active

### Community Information

Address	1349 Keswick Drive
Area	Edmonton
Subdivision	Keswick Area
City	Edmonton
County	ALBERTA
Province	AB
Postal Code	T6W 4V8

### Amenities

Amenities	Ceiling 9 ft., See Remarks
Parking	Single Garage Detached
Is Waterfront	Yes

### Interior

Interior Features	ensuite bathroom
Appliances	Garage Control, Garage Opener, See Remarks
Heating	Forced Air-1, Natural Gas
Stories	2
Has Basement	Yes
Basement	Full, Unfinished

### Exterior

Exterior	Wood, Vinyl
Exterior Features	Airport Nearby, Playground Nearby, Public Transportation, Schools, Shopping Nearby, Stream/Pond
Roof	Asphalt Shingles
Construction	Wood, Vinyl
Foundation	Concrete Perimeter

### Additional Information

Date Listed	April 17th, 2025
Days on Market	86

Zoning	Zone 56
HOA Fees	1
HOA Fees Freq.	Annually

DATA IS DEEMED RELIABLE BUT IS NOT GUARANTEED ACCURATE BY THE REALTORS® ASSOCIATION OF EDMONTON. COPYRIGHT 2025 BY THE REALTORS® ASSOCIATION OF EDMONTON. ALL RIGHTS RESERVED. Trademarks are owned or controlled by the Canadian Real Estate Association (CREA) and identify real estate professionals who are members of CREA (REALTOR®, REALTORS®) and/or the quality of services they provide (MLS®, Multiple Listing Service®)

Listing information last updated on July 12th, 2025 at 12:47am MDT