

## \$689,900 - 9429 100a Street, Edmonton

MLS® #E4432113

### \$689,900

5 Bedroom, 3.50 Bathroom, 1,733 sqft  
Single Family on 0.00 Acres

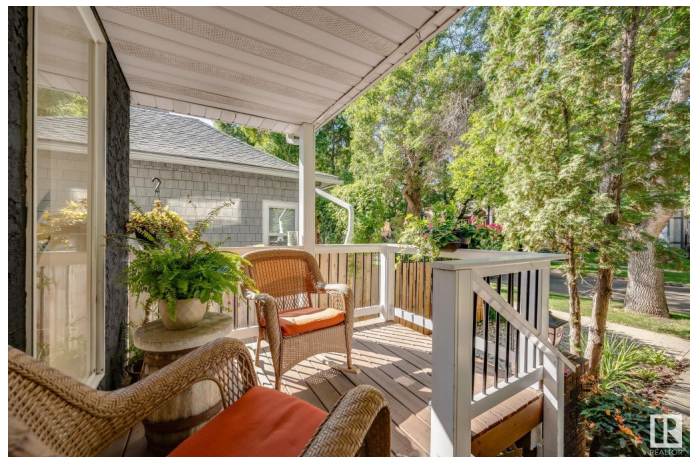
Rosssdale, Edmonton, AB

FULLY RENOVATED 5 BED HOME  
BACKING ONTO THE RIVER VALLEY  
TRAILS IN ROSSDALE!! With 10/10 curb  
appeal and tranquil pond this stunning open  
concept living space is sure to impress.  
Drenched in natural light, you are greeted by  
your spacious living room with a gas fireplace  
accentuated by maple hardwood floors  
throughout. Step into your dream kitchen  
complete with an eat up island, cherrywood  
custom cabinets, granite counters and tons of  
space to cook your favourite meals. Head out  
to your peaceful backyard oasis backing  
parkland and endless River Valley views.  
Upstairs you will find a huge primary complete  
with a balcony and 4 pc ensuite. 2 other  
generous sized bedrooms and upper floor  
laundry is perfect for a growing family, home  
office or guest suite. Downstairs you have the  
another full kitchen, rec space, 2 bedrooms  
and 3 pc bath. Surrounded by beauty, minutes  
away from the downtown core, shops, schools,  
playground, local eats and countless  
amenities. Welcome home!

Built in 1988

### Essential Information

|        |           |
|--------|-----------|
| MLS® # | E4432113  |
| Price  | \$689,900 |



|                |                        |
|----------------|------------------------|
| Bedrooms       | 5                      |
| Bathrooms      | 3.50                   |
| Full Baths     | 3                      |
| Half Baths     | 1                      |
| Square Footage | 1,733                  |
| Acres          | 0.00                   |
| Year Built     | 1988                   |
| Type           | Single Family          |
| Sub-Type       | Detached Single Family |
| Style          | 2 Storey               |
| Status         | Active                 |

### **Community Information**

|             |                  |
|-------------|------------------|
| Address     | 9429 100a Street |
| Area        | Edmonton         |
| Subdivision | Rossdale         |
| City        | Edmonton         |
| County      | ALBERTA          |
| Province    | AB               |
| Postal Code | T5K 0V4          |

### **Amenities**

|                |   |
|----------------|---|
| Amenities      | On Street Parking, Deck, Front Porch, See Remarks |
| Parking Spaces | 2   |
| Parking        | Parking Pad Cement/Paved                          |

### **Interior**

|                   |   |
|-------------------|---|
| Interior Features | ensuite bathroom  |
| Appliances        | Dishwasher-Built-In, Dryer, Hood Fan, Oven-Microwave, Washer, Refrigerators-Two, Stoves-Two |
| Heating           | Forced Air-1, Natural Gas   |
| Fireplace         | Yes   |
| Fireplaces        | Glass Door  |
| Stories           | 2   |
| Has Basement      | Yes   |
| Basement          | Full, Finished  |

### **Exterior**

|          |              |
|----------|--------------|
| Exterior | Wood, Stucco |
|----------|--------------|

|                   |   |
|-------------------|---|
| Exterior Features | Back Lane, Backs Onto Park/Trees, Fenced, Park/Reserve, Playground Nearby, Ravine View, Schools, Shopping Nearby, See Remarks |
| Roof              | Asphalt Shingles  |
| Construction      | Wood, Stucco  |
| Foundation        | Concrete Perimeter  |

**School Information**

|            |                   |
|------------|-------------------|
| Elementary | Garneau School    |
| Middle     | McKernan School   |
| High       | Strathcona School |

**Additional Information**

|                |                  |
|----------------|------------------|
| Date Listed    | April 22nd, 2025 |
| Days on Market | 9                |
| Zoning         | Zone 12          |

DATA IS DEEMED RELIABLE BUT IS NOT GUARANTEED ACCURATE BY THE REALTORS® ASSOCIATION OF EDMONTON. COPYRIGHT 2025 BY THE REALTORS® ASSOCIATION OF EDMONTON. ALL RIGHTS RESERVED.Trademarks are owned or controlled by the Canadian Real Estate Association (CREA) and identify real estate professionals who are members of CREA (REALTOR®, REALTORS®) and/or the quality of services they provide (MLS®, Multiple Listing Service®)

Listing information last updated on May 1st, 2025 at 5:47am MDT