

\$127,000 - 410 10883 Saskatchewan Drive, Edmonton

MLS® #E4433200

\$127,000

1 Bedroom, 1.00 Bathroom, 713 sqft

Condo / Townhouse on 0.00 Acres

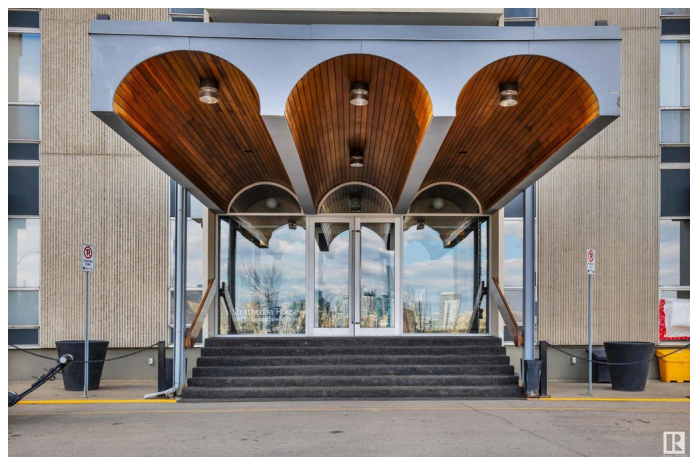
Garneau, Edmonton, AB

Strathcona House Popular High Rise
Located On Saskatchewan Drive Just off the
South End of the High Level Bridge . 1
Bedroom End Unit Located on the 4th Floor.
713 Sq. Ft. Generous Size Without
Compromise. Just Completed Decorating /
Paint Job by a Professional. Laminate
Flooring ,Ceramic Tile, Full Appliance
Package. South Facing Balcony. Well
Appointed Work - Out Room for Wellness,
Serene Large Outdoor Garden, Bar B Que
Area .. Don't Miss It . Monthly Condominium
Fee Inclusive of All Utilities !! Neutral
Cabinetry. Ideal Location for Medical
Professionals (Mackenzie, Stollery) Students (University of Alberta) Walking Distance. Steps
to the River Valley Trail System, The Vibrant
Whyte Avenue Seen. Restaurants, Coffee,
Chai Shops, Grocery Store, All Services.
Outdoor Parking Stall 95. Calling STUDENTS
/ INVESTORS !! Immediate Availability.
10883 - Saskatchewan Drive

Built in 1968

Essential Information

| | |
|-----------|-----------|
| MLS® # | E4433200 |
| Price | \$127,000 |
| Bedrooms | 1 |
| Bathrooms | 1.00 |



| | |
|----------------|------------------------|
| Full Baths | 1 |
| Square Footage | 713 |
| Acres | 0.00 |
| Year Built | 1968 |
| Type | Condo / Townhouse |
| Sub-Type | Apartment High Rise |
| Style | Single Level Apartment |
| Status | Active |

Community Information

| | |
|-------------|------------------------------|
| Address | 410 10883 Saskatchewan Drive |
| Area | Edmonton |
| Subdivision | Garneau |
| City | Edmonton |
| County | ALBERTA |
| Province | AB |
| Postal Code | T6E 4S6 |

Amenities

| | |
|----------------|--|
| Amenities | Exercise Room, Gazebo, No Animal Home, No Smoking Home, Parking-Plug-Ins, Parking-Visitor, Patio, Security Door, See Remarks |
| Parking Spaces | 1 |
| Parking | Stall, See Remarks |

Interior

| | |
|--------------|--|
| Appliances | Oven-Microwave, Refrigerator, Stove-Electric |
| Heating | Hot Water, Natural Gas |
| # of Stories | 20 |
| Stories | 1 |
| Has Basement | Yes |
| Basement | None, No Basement |

Exterior

| | |
|-------------------|--|
| Exterior | Concrete |
| Exterior Features | Landscaped, Park/Reserve, Picnic Area, Recreation Use, Schools, Shopping Nearby, View City, View Downtown, See Remarks |
| Roof | Asphalt Shingles |
| Construction | Concrete |
| Foundation | Concrete Perimeter |

Additional Information

| | |
|----------------|------------------|
| Date Listed | April 28th, 2025 |
| Days on Market | 3 |
| Zoning | Zone 15 |
| Condo Fee | \$671 |

DATA IS DEEMED RELIABLE BUT IS NOT GUARANTEED ACCURATE BY THE REALTORS® ASSOCIATION OF EDMONTON. COPYRIGHT 2025 BY THE REALTORS® ASSOCIATION OF EDMONTON. ALL RIGHTS RESERVED.Trademarks are owned or controlled by the Canadian Real Estate Association (CREA) and identify real estate professionals who are members of CREA (REALTOR®, REALTORS®) and/or the quality of services they provide (MLS®, Multiple Listing Service®)

Listing information last updated on May 1st, 2025 at 4:17am MDT