

\$8,545,470 - 5910 70 Street, Edmonton

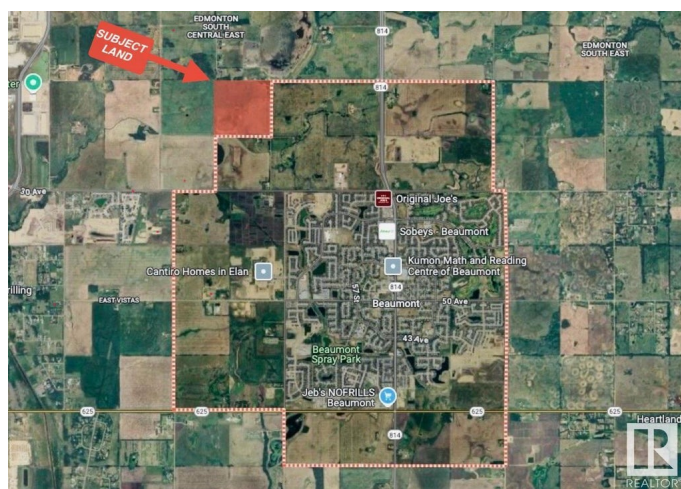
MLS® #E4434446

\$8,545,470

0 Bedroom, 0.00 Bathroom,
Land Commercial on 0.00 Acres

Edmonton South East, Edmonton, AB

Prime 153.82-Acre Parcel for Future Residential Development â€” Southeast Edmonton Located at 5910 - 70 Street SW, within the City of Edmonton (on Range Road 242 between 41 Avenue SW and Township Road 510), this expansive 153.82-acre property offers a rare opportunity for investment and future growth. Currently under cultivation, the land is part of the inter-municipal planning framework and is designated for future urban residential development. With limited large parcels remaining in this rapidly growing southeast Edmonton corridor, this property presents exceptional long-term potential at a highly attractive price.



Essential Information

MLS® #	E4434446
Price	\$8,545,470
Bathrooms	0.00
Acres	0.00
Type	Land Commercial
Status	Active

Community Information

Address	5910 70 Street
Area	Edmonton

Subdivision	Edmonton South East
City	Edmonton
County	ALBERTA
Province	AB
Postal Code	T4X 0N3

Additional Information

Date Listed	May 4th, 2025
Days on Market	42
Zoning	Zone 33

DATA IS DEEMED RELIABLE BUT IS NOT GUARANTEED ACCURATE BY THE REALTORS® ASSOCIATION OF EDMONTON. COPYRIGHT 2025 BY THE REALTORS® ASSOCIATION OF EDMONTON. ALL RIGHTS RESERVED. Trademarks are owned or controlled by the Canadian Real Estate Association (CREA) and identify real estate professionals who are members of CREA (REALTOR®, REALTORS®) and/or the quality of services they provide (MLS®, Multiple Listing Service®)

Listing information last updated on June 15th, 2025 at 6:47pm MDT