

Courtesy Of Wendi Darling Of Century 21 Masters

\$222,000 - 91 7604 29 Avenue, Edmonton

MLS® #E4437591

\$222,000

3 Bedroom, 1.50 Bathroom, 1,305 sqft

Condo / Townhouse on 0.00 Acres

Kameyosek, Edmonton, AB

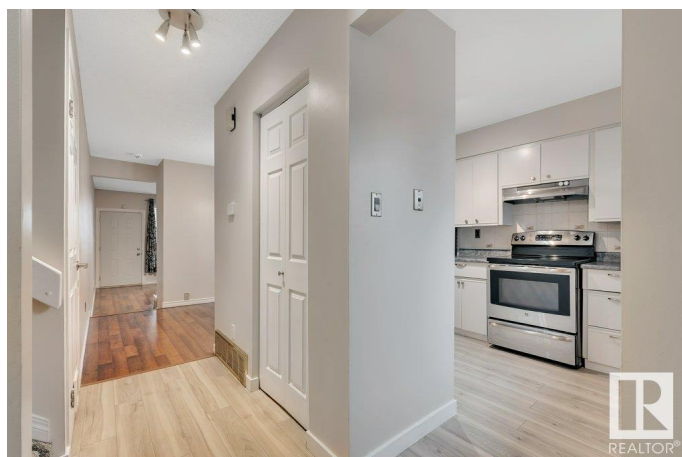
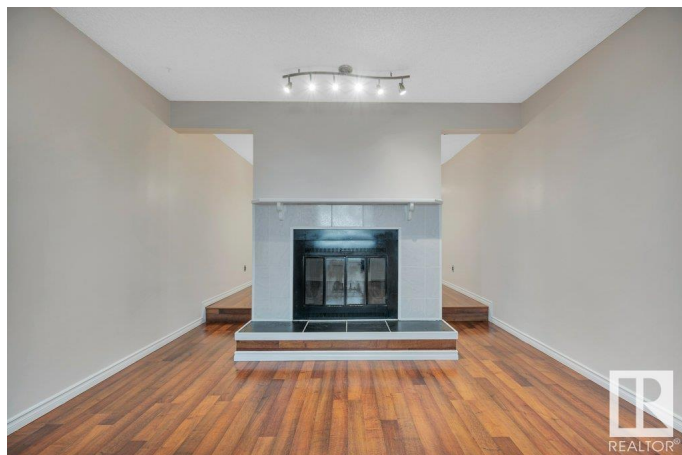
Welcome to this freshly painted 3-bedroom townhouse with a framed-in 4th bedroom option in the basement. The layout offers unique flexibility with a bedroom on the main floor—perfect for a home office, or playroom—and two more upstairs, including a primary suite with a private balcony and walk in closet. The bright kitchen features professionally painted white cabinets with silver hardware, plus newer stove and dishwasher. Enjoy the feature living room fireplace, or step out to the fully fenced backyard with a garden bed and views of the park. The upstairs 4-piece bath includes double sinks, while the main floor has a convenient 2-piece. Freshly steamed carpet, luxury vinyl flooring, laminate and tile throughout. This 2-storey home includes 2 outdoor parking stalls right out front a newer high efficiency furnace, new washer/dryer and spigot in the garden. The complex features newer windows and is close to parks, schools, and plenty of transportation options—offering comfort, flexibility, and value.

Built in 1981

Essential Information

MLS® # E4437591

Price \$222,000



Bedrooms	3
Bathrooms	1.50
Full Baths	1
Half Baths	1
Square Footage	1,305
Acres	0.00
Year Built	1981
Type	Condo / Townhouse
Sub-Type	Townhouse
Style	2 Storey
Status	Active

Community Information

Address	91 7604 29 Avenue
Area	Edmonton
Subdivision	Kameyosek
City	Edmonton
County	ALBERTA
Province	AB
Postal Code	T6K 3Z3

Amenities

Amenities	Deck, Hot Wtr Tank-Energy Star, Parking-Visitor, Vinyl Windows, See Remarks
Parking	2 Outdoor Stalls

Interior

Appliances	Dishwasher-Built-In, Dryer, Oven-Microwave, Refrigerator, Stove-Electric, Washer, Window Coverings
Heating	Forced Air-1, Natural Gas
Fireplace	Yes
Fireplaces	Tile Surround
Stories	2
Has Basement	Yes
Basement	Full, Unfinished

Exterior

Exterior	Wood, Stucco, Vinyl
Exterior Features	Fenced, Flat Site, Level Land, Low Maintenance Landscape, Playground

Nearby, Public Transportation, Schools, See Remarks

Roof	Asphalt Shingles
Construction	Wood, Stucco, Vinyl
Foundation	Concrete Perimeter

School Information

Elementary	Kameyosek School
Middle	kisÅªwÅ«tisiwin School
High	J. Percy Page School

Additional Information

Date Listed	May 21st, 2025
Days on Market	16
Zoning	Zone 29
Condo Fee	\$466

DATA IS DEEMED RELIABLE BUT IS NOT GUARANTEED ACCURATE BY THE REALTORS® ASSOCIATION OF EDMONTON. COPYRIGHT 2025 BY THE REALTORS® ASSOCIATION OF EDMONTON. ALL RIGHTS RESERVED.Trademarks are owned or controlled by the Canadian Real Estate Association (CREA) and identify real estate professionals who are members of CREA (REALTOR®, REALTORS®) and/or the quality of services they provide (MLS®, Multiple Listing Service®)

Listing information last updated on June 6th, 2025 at 1:32am MDT