

## \$649,995 - 4723 Crabapple Run, Edmonton

MLS® #E4437624

**\$649,995**

4 Bedroom, 3.50 Bathroom, 2,078 sqft

Single Family on 0.00 Acres

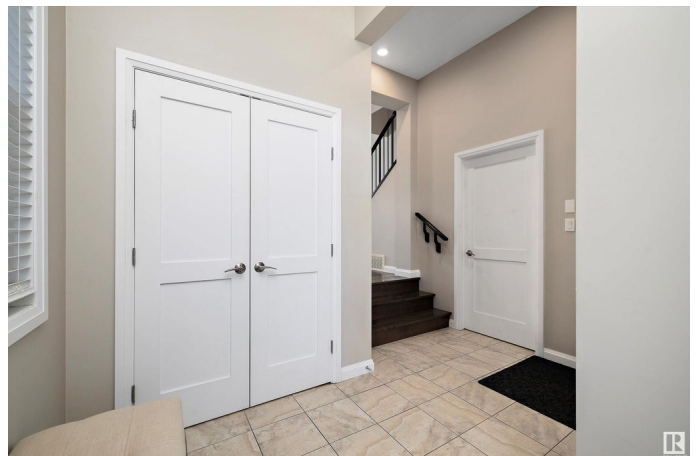
The Orchards At Ellerslie, Edmonton, AB

Welcome Home !!! This exceptional Jayman built home with TANDEM/TRIPLE garage, in the desirable community of Orchards. The main floor open concept with huge windows provides lots of natural light. The corner pantry, maple cabinets, Granite counter tops and sink, fireplace with half bath on the main floor makes it an ideal layout. The upstairs has a bonus room, 3 bedrooms, 4 piece bath and laundry is conveniently located upstairs. The primary has a walk in closet and large 5pc ensuite with separate shower, soaker tub and 2 sinks. The basement is fully finished with a family room, media room, 4 piece bathroom and a oversized bedroom and tons of storage. Other upgrades include, air conditioning, metal spindle railings, hardwood floors. Outside the property backs onto a green belt with walking path, fully fenced, fully landscaped, and huge deck.

Built in 2013

### Essential Information

MLS® #	E4437624
Price	\$649,995
Bedrooms	4
Bathrooms	3.50
Full Baths	3
Half Baths	1



Square Footage	2,078
Acres	0.00
Year Built	2013
Type	Single Family
Sub-Type	Detached Single Family
Style	2 Storey
Status	Active

### Community Information

Address	4723 Crabapple Run
Area	Edmonton
Subdivision	The Orchards At Ellerslie
City	Edmonton
County	ALBERTA
Province	AB
Postal Code	T8X 0Y7

### Amenities

Amenities	Air Conditioner, Deck, Vinyl Windows
Parking	Triple Garage Attached

### Interior

Interior Features	ensuite bathroom
Appliances	Air Conditioning-Central, Dishwasher - Energy Star, Dryer, Garage Control, Garage Opener, Oven-Microwave, Refrigerator, Storage Shed, Stove-Countertop Gas, Stove-Electric, Washer, Window Coverings
Heating	Forced Air-1, Natural Gas
Fireplace	Yes
Fireplaces	Tile Surround
Stories	3
Has Basement	Yes
Basement	Full, Finished

### Exterior

Exterior	Wood, Vinyl
Exterior Features	Fenced, No Back Lane, Schools, Shopping Nearby
Roof	Asphalt Shingles
Construction	Wood, Vinyl
Foundation	Concrete Perimeter

**Additional Information**

Date Listed            May 21st, 2025  
Days on Market      16  
Zoning                Zone 53

DATA IS DEEMED RELIABLE BUT IS NOT GUARANTEED ACCURATE BY THE REALTORS® ASSOCIATION OF EDMONTON. COPYRIGHT 2025 BY THE REALTORS® ASSOCIATION OF EDMONTON. ALL RIGHTS RESERVED.Trademarks are owned or controlled by the Canadian Real Estate Association (CREA) and identify real estate professionals who are members of CREA (REALTOR®, REALTORS®) and/or the quality of services they provide (MLS®, Multiple Listing Service®)  
Listing information last updated on June 5th, 2025 at 11:32pm MDT