

\$149,900 - 221 155 Edwards Drive, Edmonton

MLS® #E4437900

\$149,900

1 Bedroom, 1.00 Bathroom, 633 sqft

Condo / Townhouse on 0.00 Acres

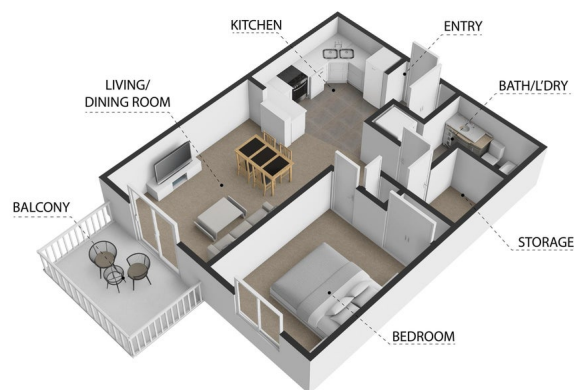
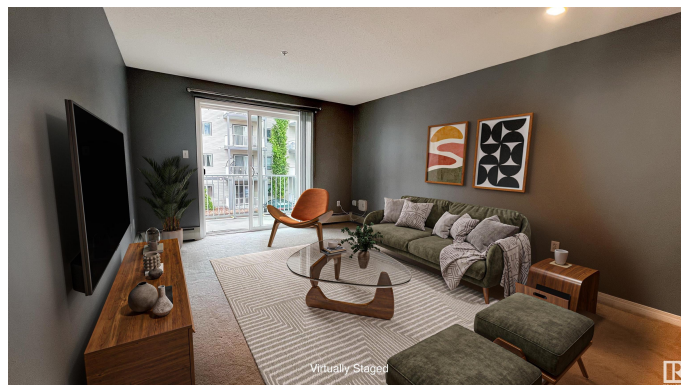
Ellerslie, Edmonton, AB

Welcome to #221 in Park Place Ellerslie Crossing—a well-maintained one-bedroom condo offering comfort, convenience, and great value. The open-concept layout features a spacious kitchen with ample counter space and an eat-up bar, flowing into the bright living room with access to your private balcony through large patio doors. The bedroom is generously sized and fits a king bed with ease. The full bathroom includes in-suite stacked laundry for added convenience. You™ll also appreciate the large in-unit storage room for your extras. This unit comes with one titled underground parking stall, and the building offers a fitness centre and plenty of visitor parking. Ideally located near parks, green space, and a playground, with quick access to shopping, dining, Anthony Henday Drive, and South Edmonton Common. A great opportunity for first-time buyers, downsizers, or investors!

Built in 2005

Essential Information

MLS® #	E4437900
Price	\$149,900
Bedrooms	1
Bathrooms	1.00
Full Baths	1



155 Edwards Drive SW, Edmonton, AB, T6X 1N6
All dimensions are approximate and should be used as a guide only. Measurements are taken from the center of the room. Measurements of rooms, windows, doors and any other items are approximate and do not constitute a guarantee. The plan is for information purposes only and should be used as a guide only by the prospective purchaser.



Square Footage	633
Acres	0.00
Year Built	2005
Type	Condo / Townhouse
Sub-Type	Lowrise Apartment
Style	Single Level Apartment
Status	Active

Community Information

Address	221 155 Edwards Drive
Area	Edmonton
Subdivision	Ellerslie
City	Edmonton
County	ALBERTA
Province	AB
Postal Code	T6X 1N6

Amenities

Amenities	Deck, Exercise Room, Parking-Visitor, Security Door, Sprinkler System-Fire
Parking Spaces	1
Parking	Underground

Interior

Appliances	Dishwasher-Built-In, Refrigerator, Stacked Washer/Dryer, Stove-Electric
Heating	Baseboard, Natural Gas
# of Stories	4
Stories	1
Has Basement	Yes
Basement	None, No Basement

Exterior

Exterior	Wood, Vinyl
Exterior Features	Picnic Area, Playground Nearby, Public Transportation, Schools, Shopping Nearby
Roof	Asphalt Shingles
Construction	Wood, Vinyl
Foundation	Concrete Perimeter

Additional Information

Date Listed	May 22nd, 2025
Days on Market	65
Zoning	Zone 53
Condo Fee	\$435

DATA IS DEEMED RELIABLE BUT IS NOT GUARANTEED ACCURATE BY THE REALTORS® ASSOCIATION OF EDMONTON. COPYRIGHT 2025 BY THE REALTORS® ASSOCIATION OF EDMONTON. ALL RIGHTS RESERVED. Trademarks are owned or controlled by the Canadian Real Estate Association (CREA) and identify real estate professionals who are members of CREA (REALTOR®, REALTORS®) and/or the quality of services they provide (MLS®, Multiple Listing Service®)

Listing information last updated on July 26th, 2025 at 1:17am MDT