

## \$420,000 - 24 Aberdeen Crescent, Stony Plain

MLS® #E4438202

**\$420,000**

4 Bedroom, 2.00 Bathroom, 1,163 sqft

Single Family on 0.00 Acres

St. Andrews, Stony Plain, AB

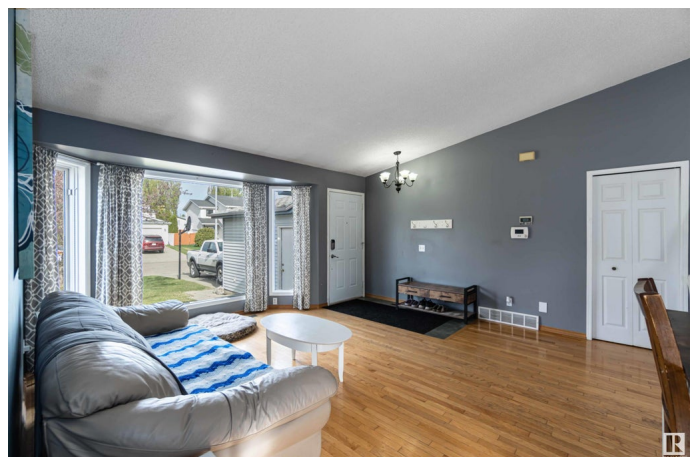
Located in a mature, family-friendly neighborhood, this stunning home combines comfort, space, and convenience—just steps from schools, parks, and shopping. Upon entering, you™re welcomed into a spacious main floor featuring a bright living room, a generous dining area, and a well-appointed kitchen with ample cupboard and counter space. Vaulted ceilings enhance the open feel, creating a warm and inviting atmosphere. Upstairs, you™ll find three generously sized bedrooms, including a spacious primary retreat with direct access to a 4-piece bathroom featuring a jetted tub. One of the additional bedrooms boasts a walk-in closet, offering extra storage. The lower level offers a cozy family room complete with a wood-burning fireplace, fourth bedroom, and 3-piece bathroom—ideal for guests or a growing family. Head down to the basement for yet another large living space and a massive laundry/storage room. Outside is a spacious deck overlooking the fully fenced and landscaped corner lot and a double car garage.

Built in 1993

### Essential Information

MLS® # E4438202

Price \$420,000



Bedrooms	4
Bathrooms	2.00
Full Baths	2
Square Footage	1,163
Acres	0.00
Year Built	1993
Type	Single Family
Sub-Type	Detached Single Family
Style	4 Level Split
Status	Active

### **Community Information**

Address	24 Aberdeen Crescent
Area	Stony Plain
Subdivision	St. Andrews
City	Stony Plain
County	ALBERTA
Province	AB
Postal Code	T7Z 1K4

### **Amenities**

Amenities	Deck, Detectors Smoke, No Smoking Home, Vaulted Ceiling
Parking Spaces	4
Parking	Double Garage Attached

### **Interior**

Appliances	Dishwasher-Built-In, Dryer, Fan-Ceiling, Garage Control, Garage Opener, Hood Fan, Refrigerator, Storage Shed, Stove-Electric, Washer, Window Coverings
Heating	Forced Air-1, Natural Gas
Fireplace	Yes
Fireplaces	Brick Facing
Stories	4
Has Basement	Yes
Basement	Full, Finished

### **Exterior**

Exterior	Wood, Stucco, Vinyl
Exterior Features	Corner Lot, Fenced, Fruit Trees/Shrubs, Landscaped, Playground

	Nearby, Schools, Shopping Nearby
Roof	Asphalt Shingles
Construction	Wood, Stucco, Vinyl
Foundation	Concrete Perimeter

### **Additional Information**

Date Listed	May 23rd, 2025
Days on Market	25
Zoning	Zone 91

DATA IS DEEMED RELIABLE BUT IS NOT GUARANTEED ACCURATE BY THE REALTORS® ASSOCIATION OF EDMONTON. COPYRIGHT 2025 BY THE REALTORS® ASSOCIATION OF EDMONTON. ALL RIGHTS RESERVED. Trademarks are owned or controlled by the Canadian Real Estate Association (CREA) and identify real estate professionals who are members of CREA (REALTOR®, REALTORS®) and/or the quality of services they provide (MLS®, Multiple Listing Service®)

Listing information last updated on June 17th, 2025 at 7:02am MDT