

\$109,900 - 9 10620 122 Street, Edmonton

MLS® #E4438801

\$109,900

2 Bedroom, 1.00 Bathroom, 723 sqft

Condo / Townhouse on 0.00 Acres

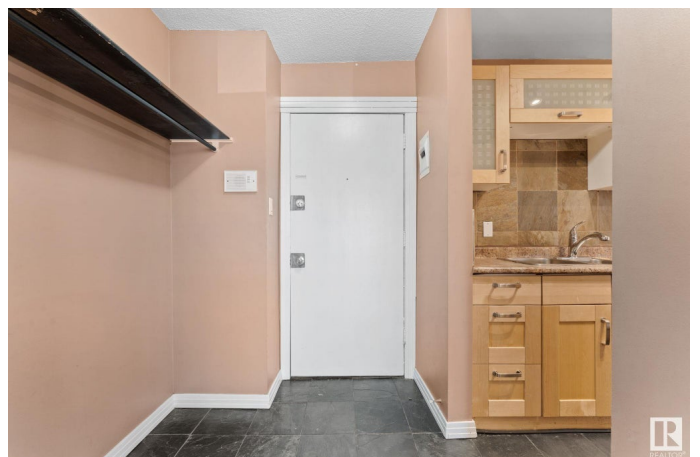
Westmount, Edmonton, AB

This home is a blend of convenience and comfort! This beautifully updated 2-bedroom, 1-bath condo offers modern living and urban accessibility. Located just minutes from downtown, you'll enjoy quick access to restaurants, cafes, shopping, and everything the city has to offer. Step inside to find upgraded finishes throughout, including sleek flooring, contemporary fixtures, and a modern kitchen perfect for entertaining or everyday living. The open-concept living space provides a bright and airy feel, while the spacious bedrooms offer comfort and flexibility. The building itself has recently undergone a full exterior renovation, giving it fresh curb appeal and enhanced value. Whether you're a first-time buyer, downsizing, or investing, this turnkey unit is ready for you to move in and enjoy.

Built in 1969

Essential Information

MLS® #	E4438801
Price	\$109,900
Bedrooms	2
Bathrooms	1.00
Full Baths	1
Square Footage	723
Acres	0.00



Year Built	1969
Type	Condo / Townhouse
Sub-Type	Lowrise Apartment
Style	Single Level Apartment
Status	Active

Community Information

Address	9 10620 122 Street
Area	Edmonton
Subdivision	Westmount
City	Edmonton
County	ALBERTA
Province	AB
Postal Code	T5N 1M8

Amenities

Amenities	On Street Parking, Security Door
Parking	Stall

Interior

Appliances	Dishwasher-Built-In, Refrigerator, Stove-Electric
Heating	Hot Water, Natural Gas
# of Stories	3
Stories	1
Has Basement	Yes
Basement	None, No Basement

Exterior

Exterior	Wood, Brick, Vinyl
Exterior Features	Back Lane, Public Transportation, Schools, Shopping Nearby
Roof	Tar & Gravel
Construction	Wood, Brick, Vinyl
Foundation	Concrete Perimeter

Additional Information

Date Listed	May 27th, 2025
Days on Market	22
Zoning	Zone 07
Condo Fee	\$513

DATA IS DEEMED RELIABLE BUT IS NOT GUARANTEED ACCURATE BY THE REALTORS® ASSOCIATION OF EDMONTON. COPYRIGHT 2025 BY THE REALTORS® ASSOCIATION OF EDMONTON. ALL RIGHTS RESERVED. Trademarks are owned or controlled by the Canadian Real Estate Association (CREA) and identify real estate professionals who are members of CREA (REALTOR®, REALTORS®) and/or the quality of services they provide (MLS®, Multiple Listing Service®)

Listing information last updated on June 18th, 2025 at 4:02pm MDT