

\$538,000 - 22413 83a Avenue, Edmonton

MLS® #E4439886

\$538,000

3 Bedroom, 2.50 Bathroom, 1,723 sqft
Single Family on 0.00 Acres

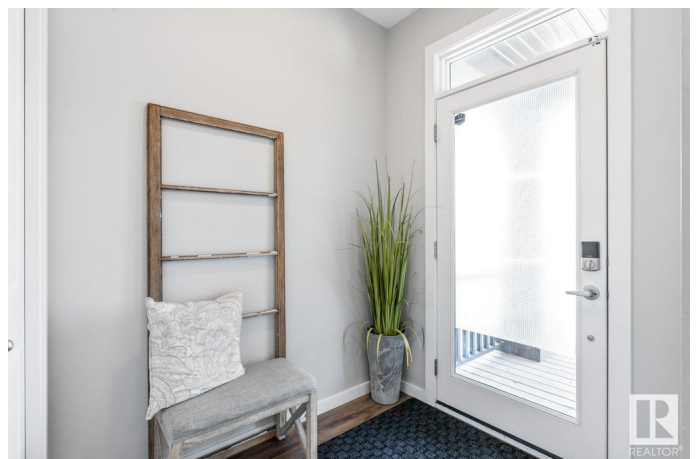
Rosenthal (Edmonton), Edmonton, AB

Welcome to this former HOMES BY AVI SHOWHOME in the highly sought-after community of Rosenthal! This stunning property features a spacious, open floor plan with 9-foot ceilings and TWO EXPANSIVE LIVING ROOMS, perfect for both relaxation and entertainment. The bright and inviting chef's kitchen is equipped with stainless steel appliances and quartz countertops, offering both style and functionality. The kitchen and dining room provide an ideal space for daily living and hosting family and friends. Upstairs, you'll find three generously sized bedrooms, offering plenty of space and comfort. Additionally, there is a full laundry room upstairs for added convenience. This immaculately kept home is a MUST SEE. PARTLY FINISHED LEGAL BASEMENT SUITE WITH PERMITS! TWO FURNANCES, ALL SUITE APPLIANCES + HVAC, PLUMBING AND ELECTRICAL COMPLETED. WELCOME HOME!

Built in 2019

Essential Information

| | |
|-----------|-----------|
| MLS® # | E4439886 |
| Price | \$538,000 |
| Bedrooms | 3 |
| Bathrooms | 2.50 |



| | |
|----------------|------------------------|
| Full Baths | 2 |
| Half Baths | 1 |
| Square Footage | 1,723 |
| Acres | 0.00 |
| Year Built | 2019 |
| Type | Single Family |
| Sub-Type | Detached Single Family |
| Style | 2 Storey |
| Status | Active |

Community Information

| | |
|-------------|----------------------|
| Address | 22413 83a Avenue |
| Area | Edmonton |
| Subdivision | Rosenthal (Edmonton) |
| City | Edmonton |
| County | ALBERTA |
| Province | AB |
| Postal Code | T5T 7R2 |

Amenities

| | |
|-----------|------------------------|
| Amenities | Ceiling 9 ft., Deck |
| Parking | Double Garage Detached |

Interior

| | |
|-------------------|---|
| Interior Features | ensuite bathroom |
| Appliances | Air Conditioning-Central, Dishwasher-Built-In, Garage Opener, Microwave Hood Fan, Window Coverings, Dryer-Two, Refrigerators-Two, Stoves-Two, Washers-Two |
| Heating | Forced Air-1, Natural Gas |
| Stories | 2 |
| Has Suite | Yes |
| Has Basement | Yes |
| Basement | Full, Partially Finished |

Exterior

| | |
|-------------------|--|
| Exterior | Wood, Vinyl |
| Exterior Features | Landscaped, Playground Nearby, Public Transportation, Schools, Shopping Nearby |
| Roof | Asphalt Shingles |

| | |
|--------------|--------------------|
| Construction | Wood, Vinyl |
| Foundation | Concrete Perimeter |

Additional Information

| | |
|----------------|----------------|
| Date Listed | June 2nd, 2025 |
| Days on Market | 14 |
| Zoning | Zone 58 |
| HOA Fees | 115 |
| HOA Fees Freq. | Annually |

DATA IS DEEMED RELIABLE BUT IS NOT GUARANTEED ACCURATE BY THE REALTORS® ASSOCIATION OF EDMONTON. COPYRIGHT 2025 BY THE REALTORS® ASSOCIATION OF EDMONTON. ALL RIGHTS RESERVED.Trademarks are owned or controlled by the Canadian Real Estate Association (CREA) and identify real estate professionals who are members of CREA (REALTOR®, REALTORS®) and/or the quality of services they provide (MLS®, Multiple Listing Service®)

Listing information last updated on June 16th, 2025 at 4:32am MDT