

Courtesy Of Mukul Oberoi Of RE/MAX Excellence

\$0 - 1059 Parsons Road, Edmonton

MLS® #E4440680

\$0

0 Bedroom, 0.00 Bathroom,
Office on 0.00 Acres

Ellerslie Industrial, Edmonton, AB

Prime leasing opportunity in South Edmonton on busy Parsons Road! This upper-floor office space offers 1,000 square feet. Located in a high-traffic, well-established commercial area, this space is ideal for professional services or creative studios. Flexible layout options to suit your needs.

Built in 2010

Essential Information

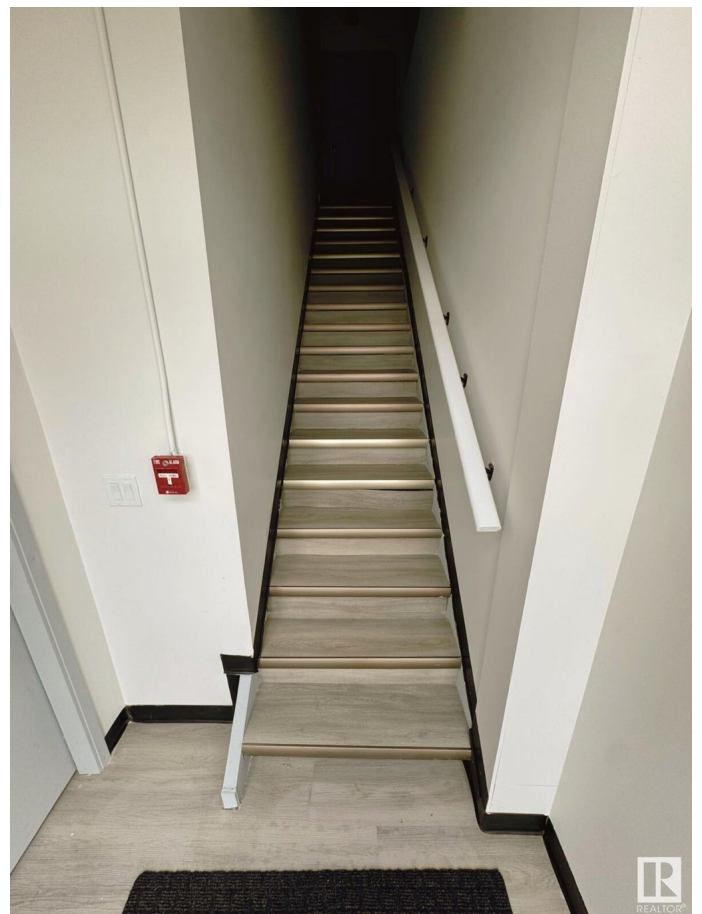
MLS® #	E4440680
Bathrooms	0.00
Acres	0.00
Year Built	2010
Type	Office
Status	Active

Community Information

Address	1059 Parsons Road
Area	Edmonton
Subdivision	Ellerslie Industrial
City	Edmonton
County	ALBERTA
Province	AB
Postal Code	T6X 0X2

Exterior

Exterior	Mixed
----------	-------



Construction Mixed

Additional Information

Date Listed June 3rd, 2025

Days on Market 83

Zoning Zone 54

DATA IS DEEMED RELIABLE BUT IS NOT GUARANTEED ACCURATE BY THE REALTORS® ASSOCIATION OF EDMONTON. COPYRIGHT 2025 BY THE REALTORS® ASSOCIATION OF EDMONTON. ALL RIGHTS RESERVED. Trademarks are owned or controlled by the Canadian Real Estate Association (CREA) and identify real estate professionals who are members of CREA (REALTOR®, REALTORS®) and/or the quality of services they provide (MLS®, Multiple Listing Service®)

Listing information last updated on August 25th, 2025 at 1:02pm MDT