

\$579,900 - 3912 115a Street, Edmonton

MLS® #E4440789

\$579,900

4 Bedroom, 2.00 Bathroom, 1,009 sqft

Single Family on 0.00 Acres

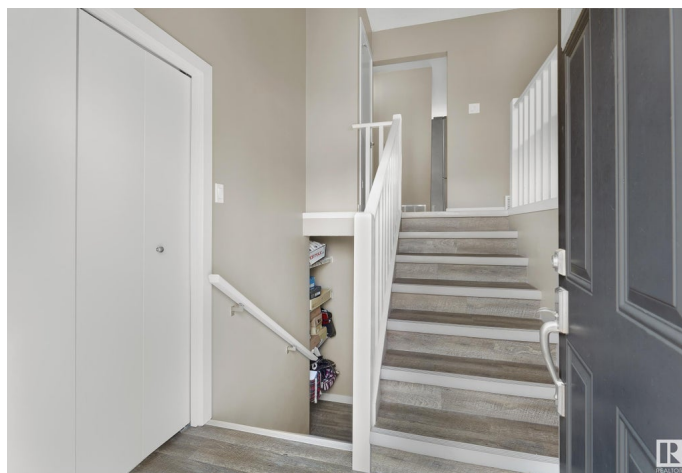
Greenfield, Edmonton, AB

Greenfield â€“ A strong family community with 3 schools, parks & is represented by the Greenfield Community League, established in 1967, with a community hall, outdoor rink & tennis courts! This 1967 bi-level has been renovated (new shingles-windows-garage & more!) & a 2-bedrom legal suite has been added to the basement totaling 2017sqft of finished living space - 4 bedrooms & 2 full bathrooms. The main floor has 1008sqft â€“ 2 bedrooms, renovated 4-piece bath, updated kitchen, new flooring, new windows â€“ bright & open. The 2-bedroom legal basement suite has 939sqft â€“ 2-bedrooms, new 4-piece bath, new kitchen, new flooring, new windows, new paint â€“ also bright & open concept. Additionally, the home has new furnaces, New Hot water tanks, New Electrical, New Garage, New Landscaping â€“ everything has been done for you to move in & rent out the basement!

Built in 1967

Essential Information

MLS® #	E4440789
Price	\$579,900
Bedrooms	4
Bathrooms	2.00
Full Baths	2



Square Footage	1,009
Acres	0.00
Year Built	1967
Type	Single Family
Sub-Type	Detached Single Family
Style	Bi-Level
Status	Active

Community Information

Address	3912 115a Street
Area	Edmonton
Subdivision	Greenfield
City	Edmonton
County	ALBERTA
Province	AB
Postal Code	T6J 1R1

Amenities

Amenities	Air Conditioner, Detectors Smoke
Parking Spaces	4
Parking	Double Garage Detached, Over Sized

Interior

Appliances	Dishwasher-Built-In, Dryer, Garage Control, Garage Opener, Washer, Refrigerators-Two, Stoves-Two
Heating	Forced Air-2, Natural Gas
Stories	2
Has Suite	Yes
Has Basement	Yes
Basement	Full, Finished

Exterior

Exterior	Wood, Vinyl
Exterior Features	Back Lane, Fenced, Landscaped, Playground Nearby, Public Transportation, Schools, Shopping Nearby
Roof	Asphalt Shingles
Construction	Wood, Vinyl
Foundation	Concrete Perimeter

School Information

Elementary	Greenfield School
Middle	Vernon Barford School
High	Harry Ainlay School

Additional Information

Date Listed	June 6th, 2025
-------------	----------------

Days on Market	10
----------------	----

Zoning	Zone 16
--------	---------

DATA IS DEEMED RELIABLE BUT IS NOT GUARANTEED ACCURATE BY THE REALTORS® ASSOCIATION OF EDMONTON. COPYRIGHT 2025 BY THE REALTORS® ASSOCIATION OF EDMONTON. ALL RIGHTS RESERVED. Trademarks are owned or controlled by the Canadian Real Estate Association (CREA) and identify real estate professionals who are members of CREA (REALTOR®, REALTORS®) and/or the quality of services they provide (MLS®, Multiple Listing Service®)

Listing information last updated on June 16th, 2025 at 3:47pm MDT