

\$312,000 - 10160 119 Street, Edmonton

MLS® #E4441148

\$312,000

2 Bedroom, 2.00 Bathroom, 953 sqft

Condo / Townhouse on 0.00 Acres

Wähkwäntäwin, Edmonton, AB

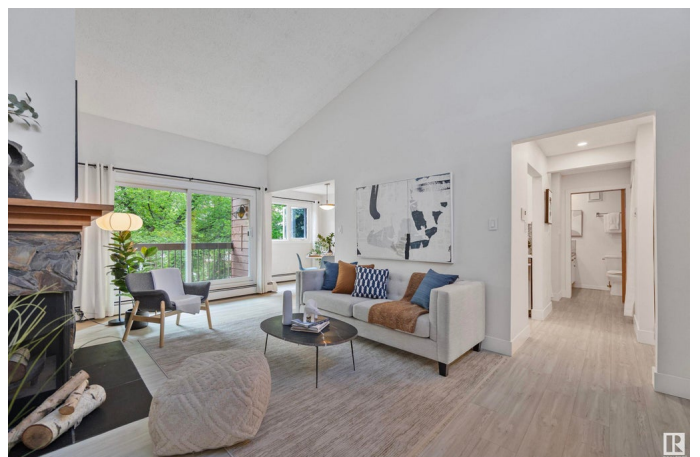
Live Among the Treetops â€” Stylish, Move-In Ready Condo in Prime Downtown Edmonton Location. This beautiful immaculate well maintained two bedroom/two bathroom condo is nestled in one of downtown Edmontonâ€™s most desirable neighbourhoods. FULLY RENOVATED in 2018, this bright and inviting home is completely move-in readyâ€”no updates or repairs needed. Whether you're a young professional, student, retiree, or discerning investor, this is an opportunity to own a peaceful, urban retreat. The east-facing balcony is perfect for morning coffee, while west-facing windows offer sky views and evening sun. There's space for your 120-inch TV and your favourite art and book collectionsâ€”no compromises on comfort or lifestyle. This building is overseen by a progressive and fiscally responsible condo board that prioritizes long-term value and sustainability. Recent and ongoing updates to the common property ensures improvements enhance residents' quality of life while protecting investment value. U/G parking!

Built in 1980

Essential Information

MLS® # E4441148

Price \$312,000



Bedrooms	2
Bathrooms	2.00
Full Baths	2
Square Footage	953
Acres	0.00
Year Built	1980
Type	Condo / Townhouse
Sub-Type	Lowrise Apartment
Style	Single Level Apartment
Status	Active

Community Information

Address	10160 119 Street
Area	Edmonton
Subdivision	WÃ©hkwÃ¢ntÃ´win
City	Edmonton
County	ALBERTA
Province	AB
Postal Code	T5K 1Y9

Amenities

Amenities	Intercom, No Animal Home, No Smoking Home, Secured Parking, Security Door, Storage-Locker Room, Vaulted Ceiling, Vinyl Windows
Parking Spaces	1
Parking	Heated, Parkade, Stall, Underground

Interior

Interior Features	ensuite bathroom
Appliances	Dishwasher-Built-In, Dryer, Refrigerator, Stove-Electric, Washer, Window Coverings
Heating	Hot Water, Natural Gas
Fireplace	Yes
Fireplaces	Mantel, Stone Facing
# of Stories	4
Stories	1
Has Basement	Yes
Basement	None, No Basement

Exterior

Exterior	Wood, Brick, Stucco
Exterior Features	Back Lane, Golf Nearby, Landscaped, Park/Reserve, Public Transportation, Schools, Shopping Nearby
Roof	Asphalt Shingles
Construction	Wood, Brick, Stucco
Foundation	Concrete Perimeter

Additional Information

Date Listed	June 7th, 2025
Days on Market	9
Zoning	Zone 12
Condo Fee	\$610

DATA IS DEEMED RELIABLE BUT IS NOT GUARANTEED ACCURATE BY THE REALTORS® ASSOCIATION OF EDMONTON. COPYRIGHT 2025 BY THE REALTORS® ASSOCIATION OF EDMONTON. ALL RIGHTS RESERVED. Trademarks are owned or controlled by the Canadian Real Estate Association (CREA) and identify real estate professionals who are members of CREA (REALTOR®, REALTORS®) and/or the quality of services they provide (MLS®, Multiple Listing Service®)

Listing information last updated on June 16th, 2025 at 9:17am MDT