

\$1,295,000 - 3287 Whitelaw Drive, Edmonton

MLS® #E4441277

\$1,295,000

6 Bedroom, 5.00 Bathroom, 3,369 sqft

Single Family on 0.00 Acres

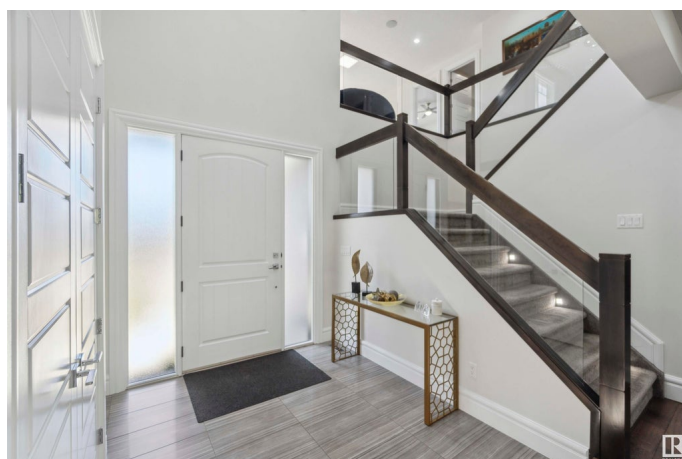
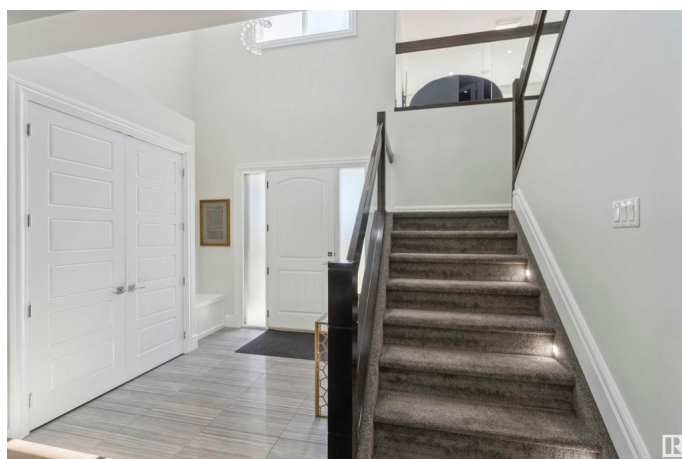
Windermere, Edmonton, AB

LUXURIOUS CUSTOM-BUILT 2-story home with close to 4600 SQFT OF FINISHED LIVING SPACE in Windermere, featuring 6 bedrooms, 5 bathrooms, air-conditioning and a TRIPLE OVERSIZED HEATED ATTACHED GARAGE. The main level offers a guest suite with ensuite, spacious great room with fireplace, gourmet kitchen with quartz countertops and stainless-steel appliances, AN ADDITIONAL FULL SPICE KITCHEN, coffered ceiling in dining area, and covered deck. The second level includes the primary bedroom with 5 pcs ensuite, two bedrooms with a Jack and Jill bath, another large bedroom with 4 pcs ensuite, laundry room and a BRIGHT BONUS ROOM. The FULLY FINISHED BASEMENT includes a rec room, office, exercise room, wet bar, plenty of storage, and ANOTHER LARGE BEDROOM WITH ENSUITE. Enjoy the LOW-MAINTENANCE LANDSCAPING with artificial turf, stone water feature, premium rock, and fencing for added privacy. The whole home was recently painted and new carpeting throughout.

Built in 2015

Essential Information

MLS® #	E4441277
Price	\$1,295,000



Bedrooms	6
Bathrooms	5.00
Full Baths	5
Square Footage	3,369
Acres	0.00
Year Built	2015
Type	Single Family
Sub-Type	Detached Single Family
Style	2 Storey
Status	Active

Community Information

Address	3287 Whitelaw Drive
Area	Edmonton
Subdivision	Windermere
City	Edmonton
County	ALBERTA
Province	AB
Postal Code	T6W 0P5

Amenities

Amenities	Air Conditioner, Ceiling 9 ft., Deck, Exercise Room, Hot Water Natural Gas, No Animal Home
Parking Spaces	6
Parking	Heated, Triple Garage Attached

Interior

Interior Features	ensuite bathroom
Appliances	Air Conditioning-Central, Dryer, Garage Opener, Hood Fan, Humidifier-Power(Furnace), Microwave Hood Fan, Oven-Built-In, Oven-Microwave, Stove-Countertop Gas, Stove-Gas, Washer, Window Coverings, Refrigerators-Two, Dishwasher-Two, Garage Heater
Heating	Forced Air-2, Natural Gas
Fireplace	Yes
Fireplaces	Wall Mount
Stories	3
Has Basement	Yes
Basement	Full, Finished

Exterior

Exterior	Wood, Stone, Vinyl
Exterior Features	Airport Nearby, Fenced, Landscaped, Low Maintenance Landscape, Playground Nearby, Schools, Shopping Nearby
Roof	Asphalt Shingles
Construction	Wood, Stone, Vinyl
Foundation	Concrete Perimeter

School Information

Elementary	Constable Daniel Woodall
Middle	Riverbend School
High	Lillian Osborne School

Additional Information

Date Listed	June 9th, 2025
Days on Market	8
Zoning	Zone 56
HOA Fees	210
HOA Fees Freq.	Monthly

DATA IS DEEMED RELIABLE BUT IS NOT GUARANTEED ACCURATE BY THE REALTORS® ASSOCIATION OF EDMONTON. COPYRIGHT 2025 BY THE REALTORS® ASSOCIATION OF EDMONTON. ALL RIGHTS RESERVED.Trademarks are owned or controlled by the Canadian Real Estate Association (CREA) and identify real estate professionals who are members of CREA (REALTOR®, REALTORS®) and/or the quality of services they provide (MLS®, Multiple Listing Service®)

Listing information last updated on June 17th, 2025 at 12:17am MDT