

\$145,000 - 1438 Lakeland Village, Sherwood Park

MLS® #E4441407

\$145,000

3 Bedroom, 2.00 Bathroom, 1,131 sqft

Land Lease Community on 0.00 Acres

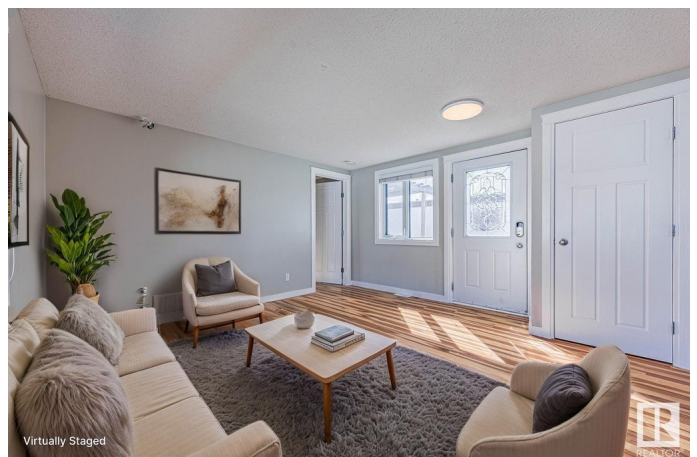
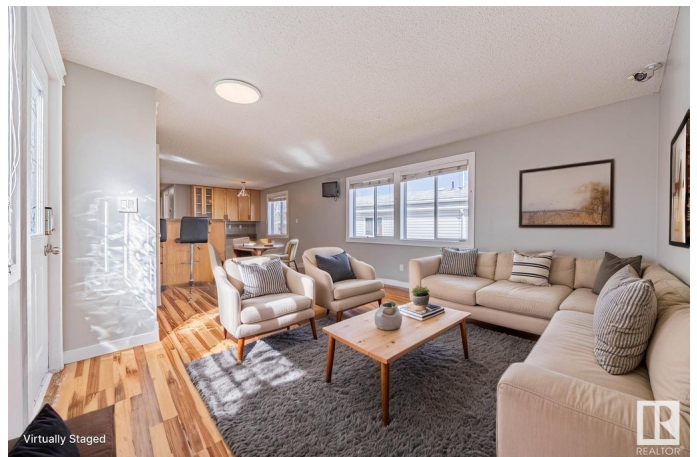
Lakeland Village, Sherwood Park, AB

Renovated, Charming Mini Home with Big Personality in Lakeland Village Small in size, big on style—this fully renovated (2012–2022) gem blends modern flair with cozy charm. Enjoy 3 spacious bedrooms with closets ready for your wardrobe dreams, 2 sleek full baths, and a gourmet kitchen with stainless steel appliances and a lazy Susan (why should Susan do all the work?). Sunlight fills the open living spaces—perfect for plants or dance-offs. Outside, relax on the sunny deck with pergola, tend to your greenhouse, or tinker in the 8x20 shed with built-in shelving. The fully fenced yard offers privacy for pets, kids, and gatherings, plus extra parking with a pad long enough for most campers (bring the toys!). Solid 2x6 construction, metal roof, thoughtful details, and a laundry room with backyard access—because even socks love sunshine. All in friendly Lakeland Village, close to Emerald Hills Shopping Centre and everyday essentials.

Built in 1979

Essential Information

MLS® #	E4441407
Price	\$145,000
Bedrooms	3
Bathrooms	2.00



Full Baths	2
Square Footage	1,131
Acres	0.00
Year Built	1979
Type	Land Lease Community
Sub-Type	Detached Single Family
Style	Bungalow
Status	Active

Community Information

Address	1438 Lakeland Village
Area	Sherwood Park
Subdivision	Lakeland Village
City	Sherwood Park
County	ALBERTA
Province	AB
Postal Code	T8H 1L9

Amenities

Parking	2 Outdoor Stalls, Parking Pad Cement/Paved
---------	--

Interior

Interior Features	ensuite bathroom
Appliances	Air Conditioner-Window, Dishwasher-Built-In, Dryer, Microwave Hood Fan, Refrigerator, Storage Shed, Stove-Electric, Washer, TV Wall Mount
Heating	Forced Air-1, Natural Gas

Exterior

Exterior	Modular
Construction	Modular
Foundation	Block

Additional Information

Date Listed	June 9th, 2025
Days on Market	6
Zoning	Zone 25

DATA IS DEEMED RELIABLE BUT IS NOT GUARANTEED ACCURATE BY THE REALTORS® ASSOCIATION OF EDMONTON. COPYRIGHT 2025 BY THE REALTORS® ASSOCIATION OF EDMONTON. ALL RIGHTS RESERVED. Trademarks are owned or controlled by the Canadian Real Estate Association (CREA) and identify real estate professionals who are members of CREA (REALTOR®, REALTORS®) and/or the quality of services they

provide (MLS®®, Multiple Listing Service®®)
Listing information last updated on June 15th, 2025 at 7:32pm MDT