

\$719,900 - 11241 34a Avenue, Edmonton

MLS® #E4442167

\$719,900

4 Bedroom, 2.50 Bathroom, 2,290 sqft

Single Family on 0.00 Acres

Greenfield, Edmonton, AB

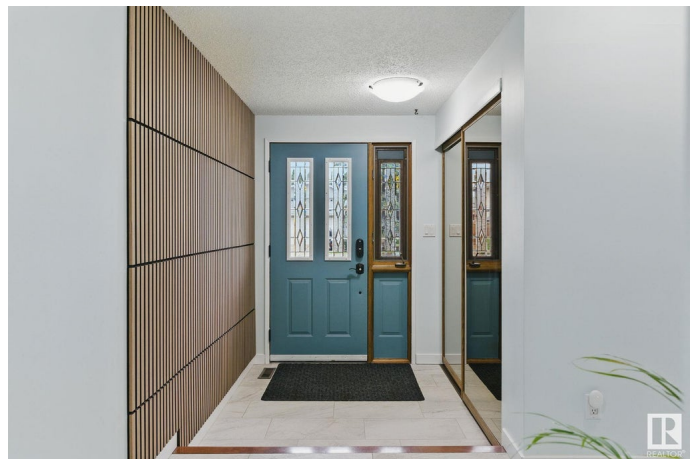
Welcome to Greenfield—one of Edmonton's most sought-after family communities! This beautifully maintained 2,290SqFt home is filled with natural light from large windows & 2 skylights. With 4+1 bedrooms, 2 fireplaces, a main floor den, laundry, and a versatile flex space perfect for a study or home office, this home offers function and comfort. The gourmet kitchen features high-end granite, induction range with pot filler, double ovens, Bosch dishwasher, wine rack, pantry, and lit display cabinetry. Enjoy spa-like bathrooms, stunning cedar sun room and a bright south-facing backyard that feels like a retreat. Recent updates include: regraded front yard with new sod, spray foam insulation in the crawl space under the addition, shingles (2012), 2 HWTs (2016 & 2023), BBQ gas line, and a heated, insulated double garage with a new door (2024). Basement includes sump pit/pump and bath drainage, plumbing & electrical rough-ins. All this and you're just steps to the LRT, top-rated schools & The Derrick Golf Club!

Built in 1976

Essential Information

MLS® # E4442167

Price \$719,900



Bedrooms	4
Bathrooms	2.50
Full Baths	2
Half Baths	1
Square Footage	2,290
Acres	0.00
Year Built	1976
Type	Single Family
Sub-Type	Detached Single Family
Style	2 Storey
Status	Active

Community Information

Address	11241 34a Avenue
Area	Edmonton
Subdivision	Greenfield
City	Edmonton
County	ALBERTA
Province	AB
Postal Code	T6J 3M4

Amenities

Amenities	Skylight
Parking	Double Garage Attached

Interior

Interior Features	ensuite bathroom
Appliances	Dishwasher-Built-In, Dryer, Garage Control, Garage Opener, Hood Fan, Humidifier-Power(Furnace), Refrigerator, Washer, Window Coverings, Oven Built-In-Two, Stove-Countertop Inductn, Garage Heater
Heating	Forced Air-1, Natural Gas
Fireplace	Yes
Fireplaces	Woodstove
Stories	3
Has Basement	Yes
Basement	Partial, Finished

Exterior

Exterior	Wood, Brick, Vinyl
----------	--------------------

Exterior Features	Golf Nearby, Landscaped, Public Transportation, Schools, Shopping Nearby, See Remarks
Roof	Asphalt Shingles
Construction	Wood, Brick, Vinyl
Foundation	Concrete Perimeter

Additional Information

Date Listed	June 13th, 2025
Days on Market	2
Zoning	Zone 16

DATA IS DEEMED RELIABLE BUT IS NOT GUARANTEED ACCURATE BY THE REALTORS® ASSOCIATION OF EDMONTON. COPYRIGHT 2025 BY THE REALTORS® ASSOCIATION OF EDMONTON. ALL RIGHTS RESERVED.Trademarks are owned or controlled by the Canadian Real Estate Association (CREA) and identify real estate professionals who are members of CREA (REALTOR®, REALTORS®) and/or the quality of services they provide (MLS®, Multiple Listing Service®)

Listing information last updated on June 15th, 2025 at 9:02pm MDT