

\$499,900 - 1520 80a Street, Edmonton

MLS® #E4445520

\$499,900

4 Bedroom, 3.00 Bathroom, 1,551 sqft

Single Family on 0.00 Acres

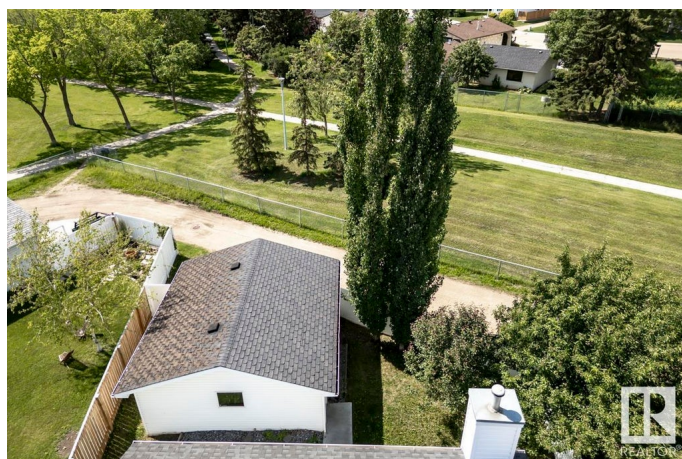
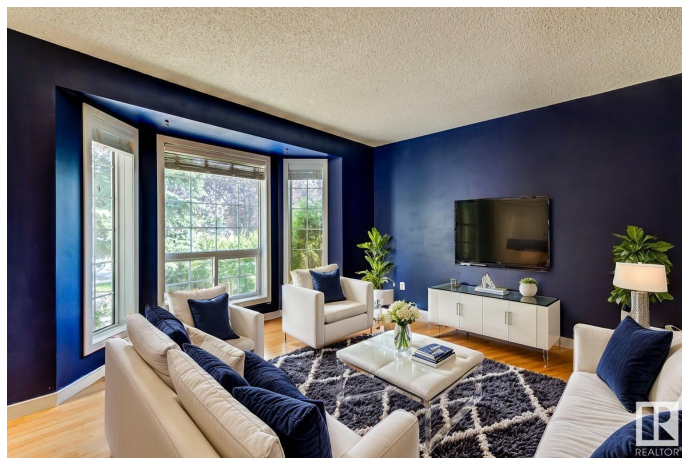
Satoo, Edmonton, AB

Finallyâ€”space to grow into, not out of. This updated 5-level split offers 2,000+ sq ft of finished living space with 4 bedrooms, 3 full baths, and room for real life. A sunlit living room with bay windows flows into a formal dining area, and the crisp kitchen shines with subway tile and stainless steel finishes. The lower family room features a fireplace and walkout to a sunny southwest-facing backyardâ€”no rear neighbours, just fruit trees, new fencing, and greenspace. Downstairs, a private guest bedroom, new bath, bonus living space, and huge crawlspace offer flexibility and storage youâ€™™ll actually use. Add a newer furnace, AC, and oversized double garageâ€”and youâ€™™ve got the total package. Quiet street, steps to parks and trails. This one just feels right.

Built in 1993

Essential Information

MLS® #	E4445520
Price	\$499,900
Bedrooms	4
Bathrooms	3.00
Full Baths	3
Square Footage	1,551
Acres	0.00
Year Built	1993



Type	Single Family
Sub-Type	Detached Single Family
Style	5 Level Split
Status	Active

Community Information

Address	1520 80a Street
Area	Edmonton
Subdivision	Satoo
City	Edmonton
County	ALBERTA
Province	AB
Postal Code	T6K 4E2

Amenities

Amenities	Air Conditioner, Closet Organizers, Crawl Space, Deck, Exterior Walls-2"x6", Smart/Program. Thermostat, Vinyl Windows
Parking Spaces	4
Parking	Double Garage Detached

Interior

Interior Features	ensuite bathroom
Appliances	Air Conditioning-Central, Dishwasher-Built-In, Dryer, Microwave Hood Fan, Refrigerator, Stove-Electric, Vacuum Systems, Washer, Window Coverings
Heating	Forced Air-1, Natural Gas
Fireplace	Yes
Fireplaces	Stone Facing
Stories	4
Has Basement	Yes
Basement	Full, Finished

Exterior

Exterior	Wood, Vinyl
Exterior Features	Backs Onto Park/Trees, Fenced, Fruit Trees/Shrubs, Golf Nearby, Landscaped, Level Land, Low Maintenance Landscape, Picnic Area, Playground Nearby, Public Transportation, Schools, Shopping Nearby
Roof	Asphalt Shingles
Construction	Wood, Vinyl
Foundation	Concrete Perimeter

Additional Information

Date Listed July 3rd, 2025
Days on Market 24
Zoning Zone 29

DATA IS DEEMED RELIABLE BUT IS NOT GUARANTEED ACCURATE BY THE REALTORS® ASSOCIATION OF EDMONTON. COPYRIGHT 2025 BY THE REALTORS® ASSOCIATION OF EDMONTON. ALL RIGHTS RESERVED.Trademarks are owned or controlled by the Canadian Real Estate Association (CREA) and identify real estate professionals who are members of CREA (REALTOR®, REALTORS®) and/or the quality of services they provide (MLS®, Multiple Listing Service®)
Listing information last updated on July 27th, 2025 at 3:47am MDT