

\$374,900 - 816 200 Bellerose Drive, St. Albert

MLS® #E4446697

\$374,900

1 Bedroom, 1.00 Bathroom, 733 sqft

Condo / Townhouse on 0.00 Acres

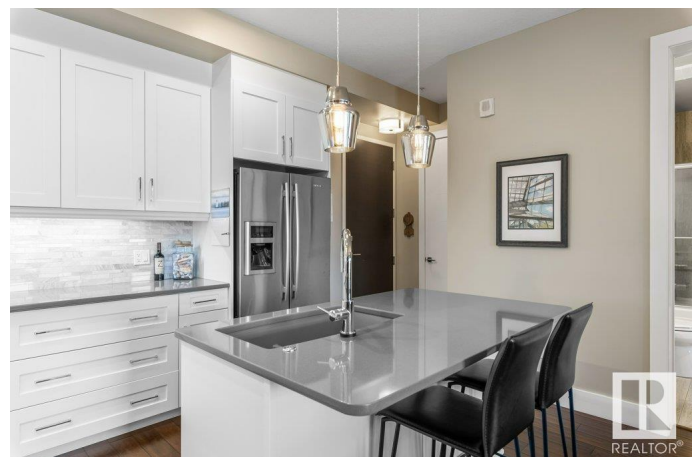
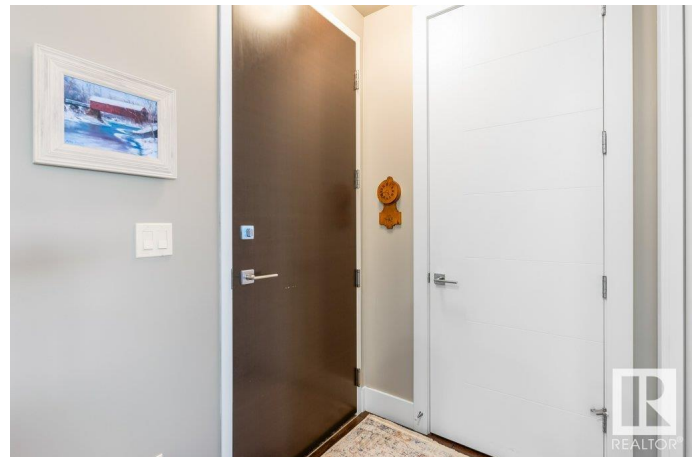
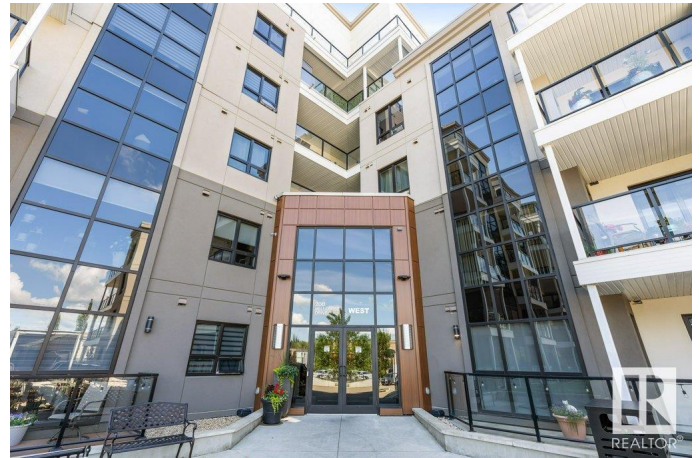
Oakmont, St. Albert, AB

Welcome to this beautiful one bedroom condo in St. Albert's most exclusive development, The Botanica! With concrete and steel construction and high end finishings throughout, including: 10' ceilings and QUARTZ counters and upgraded stainless steel appliances including a built-in oven, an INDUCTION COOKTOP! This unit features an open concept white kitchen, living room with fireplace, 4pce bath with IN FLOOR HEATING and a large primary bedroom that can accommodate a king suite. HARDWOOD floors extend throughout most of the living space. One underground parking stall with storage space in front of it comes with the unit. Some features of the building include: exercise facility that overlooks the river valley, a rooftop terrace to enjoy, a large social room and a guest suite. Very well run complex just steps to shops of Bellerose. This unit shows beautifully and is truly a must see!

Built in 2017

Essential Information

MLS® #	E4446697
Price	\$374,900
Bedrooms	1
Bathrooms	1.00
Full Baths	1



Square Footage	733
Acres	0.00
Year Built	2017
Type	Condo / Townhouse
Sub-Type	Lowrise Apartment
Style	Single Level Apartment
Status	Active

Community Information

Address	816 200 Bellerose Drive
Area	St. Albert
Subdivision	Oakmont
City	St. Albert
County	ALBERTA
Province	AB
Postal Code	T8N 7P7

Amenities

Amenities	Air Conditioner, Ceiling 10 ft., Exercise Room, Guest Suite, Parking-Visitor, Recreation Room/Centre, Secured Parking, Social Rooms, Storage-Locker Room
Parking	Heated, Parkade, Underground

Interior

Appliances	Dishwasher-Built-In, Dryer, Hood Fan, Oven-Built-In, Oven-Microwave, Refrigerator, Stove-Countertop Electric, Washer, Window Coverings, TV Wall Mount
Heating	Fan Coil, Natural Gas
Fireplace	Yes
Fireplaces	Insert, Tile Surround
# of Stories	9
Stories	1
Has Basement	Yes
Basement	None, No Basement

Exterior

Exterior	Concrete, Metal, Stucco
Exterior Features	Hillside, Landscaped, Playground Nearby, Public Transportation, Shopping Nearby, View City
Roof	EPDM Membrane

Construction	Concrete, Metal, Stucco
Foundation	Concrete Perimeter

Additional Information

Date Listed	July 8th, 2025
Days on Market	19
Zoning	Zone 24
Condo Fee	\$339

DATA IS DEEMED RELIABLE BUT IS NOT GUARANTEED ACCURATE BY THE REALTORS® ASSOCIATION OF EDMONTON. COPYRIGHT 2025 BY THE REALTORS® ASSOCIATION OF EDMONTON. ALL RIGHTS RESERVED.Trademarks are owned or controlled by the Canadian Real Estate Association (CREA) and identify real estate professionals who are members of CREA (REALTOR®, REALTORS®) and/or the quality of services they provide (MLS®, Multiple Listing Service®)

Listing information last updated on July 27th, 2025 at 5:32am MDT