

Courtesy Of Curtis L Roy Of RE/MAX Elite

\$724,900 - 15903 132 Street, Edmonton

MLS® #E4447061

\$724,900

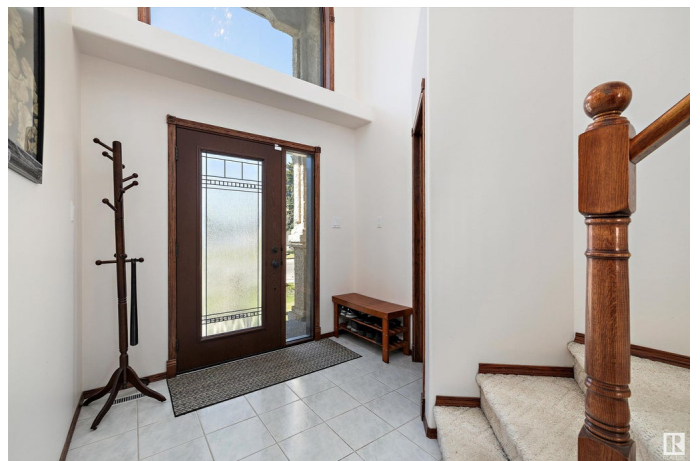
4 Bedroom, 3.50 Bathroom, 2,061 sqft
Single Family on 0.00 Acres

Oxford, Edmonton, AB

AMAZING LOCATION on a large lot BACKING THE LAKE in OXFORD, this 2061 sq. ft. fully developed POMPEII Built 2 story offers substantial UPGRADES including the FURNACE, HWT, AC, FIXTURES, NEW FRONT DOOR & UPPER WINDOW, newer APPLIANCES, Duradeck, maintenance free PVC FENCING, SUBWAY TILE BACK SPLASH, fresh paint, refinished hardwood & so much more! Rich finishings throughout featuring a spacious foyer, MAIN FLOOR DEN, GREAT ROOM with 2 STOREY CEILINGS, AMAZING VIEWS, BLINDS, GAS FIREPLACE & HARDWOOD FLOORS. The DARK CHERRY kitchen cabinetry with an ISLAND, updated subway tile backsplash & newer BLACK STAINLESS APPLIANCES with BI OVEN & COUNTER TOP STOVE, a pantry plus a handy 2 pc. BATHROOM & ACCESS to the OVERSIZED GARAGE on the main floor. Up to an open LOFT SPACE, a 4 pc. main bath plus 3 SPACIOUS BEDROOMS, the primary features a gas FIREPLACE plus the SPA ENSUITE has a separate TUB & SHOWER. Lower level is RECENTLY UPDATED with a FULL BATH, large family room, laundry, a bedroom & furnace/storage area!

Built in 1995

Essential Information



MLS® #	E4447061
Price	\$724,900
Bedrooms	4
Bathrooms	3.50
Full Baths	3
Half Baths	1
Square Footage	2,061
Acres	0.00
Year Built	1995
Type	Single Family
Sub-Type	Detached Single Family
Style	2 Storey
Status	Active

Community Information

Address	15903 132 Street
Area	Edmonton
Subdivision	Oxford
City	Edmonton
County	ALBERTA
Province	AB
Postal Code	T6V 1E4

Amenities

Amenities	Air Conditioner, Deck, Fire Pit, Low Flow Faucets/Shower, Patio
Parking Spaces	4
Parking	Double Garage Attached, Over Sized
Is Waterfront	Yes

Interior

Interior Features	ensuite bathroom
Appliances	Air Conditioning-Central, Dishwasher-Built-In, Dryer, Garage Control, Garage Opener, Oven-Microwave, Refrigerator, Stove-Countertop Electric, Washer, Window Coverings
Heating	Forced Air-1, Natural Gas
Fireplace	Yes
Fireplaces	Mantel, Stone Facing
Stories	3
Has Basement	Yes

Basement Full, Finished

Exterior

Exterior Wood, Stucco

Exterior Features Backs Onto Lake, Fenced, Low Maintenance Landscape, Public Transportation, Schools, Shopping Nearby

Lot Description 14.4x46.7

Roof Asphalt Shingles

Construction Wood, Stucco

Foundation Concrete Perimeter

School Information

Elementary Elizabeth Finch School

Middle Elizabeth Finch School

High Ross Sheppard School

Additional Information

Date Listed July 10th, 2025

Days on Market 22

Zoning Zone 27

DATA IS DEEMED RELIABLE BUT IS NOT GUARANTEED ACCURATE BY THE REALTORS® ASSOCIATION OF EDMONTON. COPYRIGHT 2025 BY THE REALTORS® ASSOCIATION OF EDMONTON. ALL RIGHTS RESERVED. Trademarks are owned or controlled by the Canadian Real Estate Association (CREA) and identify real estate professionals who are members of CREA (REALTOR®, REALTORS®) and/or the quality of services they provide (MLS®, Multiple Listing Service®)

Listing information last updated on August 1st, 2025 at 5:02pm MDT