

## \$269,900 - 206 271 Charlotte Way, Sherwood Park

MLS® #E4448867

**\$269,900**

2 Bedroom, 2.00 Bathroom, 1,027 sqft

Condo / Townhouse on 0.00 Acres

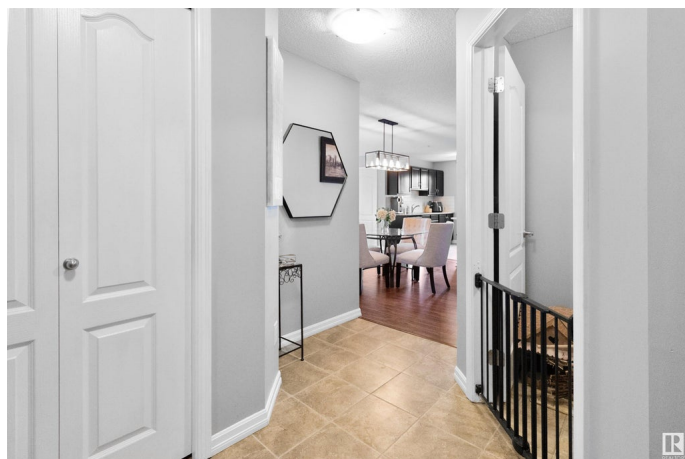
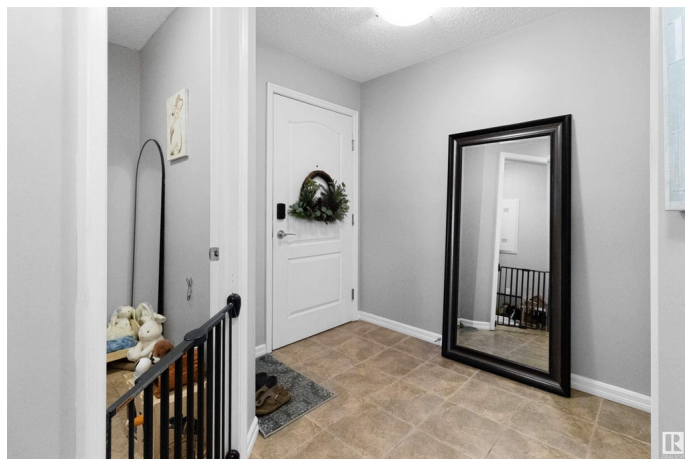
Lakeland Ridge, Sherwood Park, AB

2 BEDROOM, 2 BATHROOM + DEN! Located on the second floor in a quiet corner position, offering extra privacy and exceptional natural light. With windows on two sides, the unit enjoys a bright, airy feel and a refreshing cross-breeze during warmer months. The open-concept layout features granite countertops throughout, and the kitchen flows easily into the living and dining areas. Step outside to a private SW facing balcony, perfect for relaxing or enjoying your morning coffee. The primary bedroom includes a walk-in closet and a 3-piece ensuite, while the den adds valuable flexibility for a home office or guest space. Two parking stalls with power are included, one of which has separate title, along with a separate storage room for added convenience. Conveniently located just off Baseline Road, this home is close to countless amenities, making daily errands and dining out quick and easy.

Built in 2011

### Essential Information

|            |           |
|------------|-----------|
| MLS® #     | E4448867  |
| Price      | \$269,900 |
| Bedrooms   | 2         |
| Bathrooms  | 2.00      |
| Full Baths | 2         |



|                |                        |
|----------------|------------------------|
| Square Footage | 1,027                  |
| Acres          | 0.00                   |
| Year Built     | 2011                   |
| Type           | Condo / Townhouse      |
| Sub-Type       | Lowrise Apartment      |
| Style          | Single Level Apartment |
| Status         | Active                 |

### Community Information

|             |                       |
|-------------|-----------------------|
| Address     | 206 271 Charlotte Way |
| Area        | Sherwood Park         |
| Subdivision | Lakeland Ridge        |
| City        | Sherwood Park         |
| County      | ALBERTA               |
| Province    | AB                    |
| Postal Code | T8H 0N9               |

### Amenities

|           |   |
|-----------|---|
| Amenities | Detectors Smoke, Exercise Room, No Smoking Home, Parking-Visitor, Patio, Security Door, Sprinkler System-Fire, Storage-In-Suite |
| Parking   | 2 Outdoor Stalls  |

### Interior

|                   |  |
|-------------------|--|
| Interior Features | ensuite bathroom   |
| Appliances        | Dishwasher-Built-In, Dryer, Microwave Hood Fan, Refrigerator, Stove-Electric, Washer |
| Heating           | Baseboard, Hot Water, Natural Gas  |
| # of Stories      | 4  |
| Stories           | 1  |
| Has Basement      | Yes  |
| Basement          | None, No Basement  |

### Exterior

|                   |   |
|-------------------|---|
| Exterior          | Wood, Stone, Vinyl  |
| Exterior Features | Golf Nearby, Playground Nearby, Public Transportation, Schools, Shopping Nearby |
| Roof              | Asphalt Shingles  |
| Construction      | Wood, Stone, Vinyl  |
| Foundation        | Concrete Perimeter  |

**Additional Information**

|                |                 |
|----------------|-----------------|
| Date Listed    | July 20th, 2025 |
| Days on Market | 7               |
| Zoning         | Zone 25         |
| Condo Fee      | \$536           |

DATA IS DEEMED RELIABLE BUT IS NOT GUARANTEED ACCURATE BY THE REALTORS® ASSOCIATION OF EDMONTON. COPYRIGHT 2025 BY THE REALTORS® ASSOCIATION OF EDMONTON. ALL RIGHTS RESERVED.Trademarks are owned or controlled by the Canadian Real Estate Association (CREA) and identify real estate professionals who are members of CREA (REALTOR®, REALTORS®) and/or the quality of services they provide (MLS®, Multiple Listing Service®)

Listing information last updated on July 27th, 2025 at 5:02am MDT