

\$189,000 - 36 150 Edwards Drive, Edmonton

MLS® #E4449074

\$189,000

2 Bedroom, 1.00 Bathroom, 834 sqft

Condo / Townhouse on 0.00 Acres

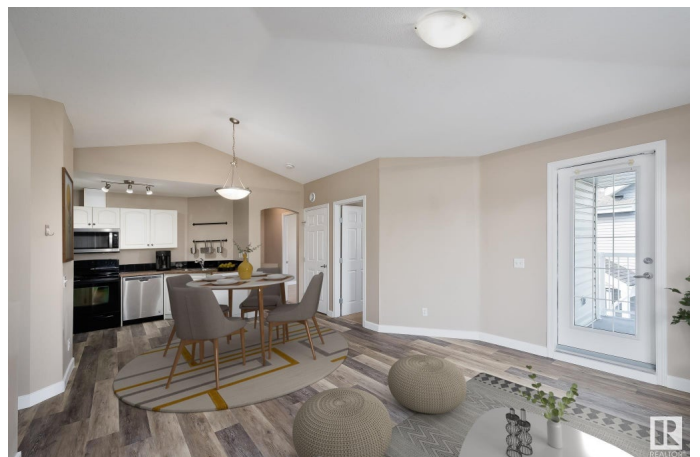
Ellerslie, Edmonton, AB

Welcome Home! This bright and well-maintained upper-floor end-unit condo offers 2 bedrooms and 1 bathroom. It is an ideal choice for first-time buyers or savvy investors. Enjoy low condo fees that include heat and water, plus a pet-friendly policy. Step into the open-concept living space featuring a functional kitchen with generous counter space and a corner pantry, all flowing seamlessly into the living and dining areas. Relax on your private balcony with views of peaceful green space – a perfect spot for morning coffee or summer evenings. The spacious primary bedroom includes a walk-in closet, while the second bedroom is perfect for guests, a home office, or a hobby room. Additional highlights include in-suite laundry, extra storage, and a powered parking stall. Ideally located near Ellerslie Road, Anthony Henday, South Edmonton Common, parks, and schools.

Built in 2005

Essential Information

MLS® #	E4449074
Price	\$189,000
Bedrooms	2
Bathrooms	1.00
Full Baths	1



Square Footage	834
Acres	0.00
Year Built	2005
Type	Condo / Townhouse
Sub-Type	Carriage
Style	Bungalow
Status	Active

Community Information

Address	36 150 Edwards Drive
Area	Edmonton
Subdivision	Ellerslie
City	Edmonton
County	ALBERTA
Province	AB
Postal Code	T6X 1M4

Amenities

Amenities	Parking-Visitor
Parking	Stall

Interior

Appliances	Dishwasher-Built-In, Dryer, Refrigerator, Stove-Electric, Washer
Heating	Forced Air-1, Natural Gas
Stories	1
Has Basement	Yes
Basement	None, No Basement

Exterior

Exterior	Wood, Vinyl
Exterior Features	Playground Nearby, Public Transportation, Schools, Shopping Nearby
Roof	Asphalt Shingles
Construction	Wood, Vinyl
Foundation	Concrete Perimeter

Additional Information

Date Listed	July 21st, 2025
Days on Market	2
Zoning	Zone 53

Condo Fee \$399

DATA IS DEEMED RELIABLE BUT IS NOT GUARANTEED ACCURATE BY THE REALTORS® ASSOCIATION OF EDMONTON. COPYRIGHT 2025 BY THE REALTORS® ASSOCIATION OF EDMONTON. ALL RIGHTS RESERVED.Trademarks are owned or controlled by the Canadian Real Estate Association (CREA) and identify real estate professionals who are members of CREA (REALTOR®, REALTORS®) and/or the quality of services they provide (MLS®, Multiple Listing Service®)

Listing information last updated on July 23rd, 2025 at 8:02pm MDT