

\$649,000 - N/A, Edmonton

MLS® #E4454466

\$649,000

2 Bedroom, 2.50 Bathroom, 1,313 sqft

Condo / Townhouse on 0.00 Acres

Windsor Park (Edmonton), Edmonton, AB

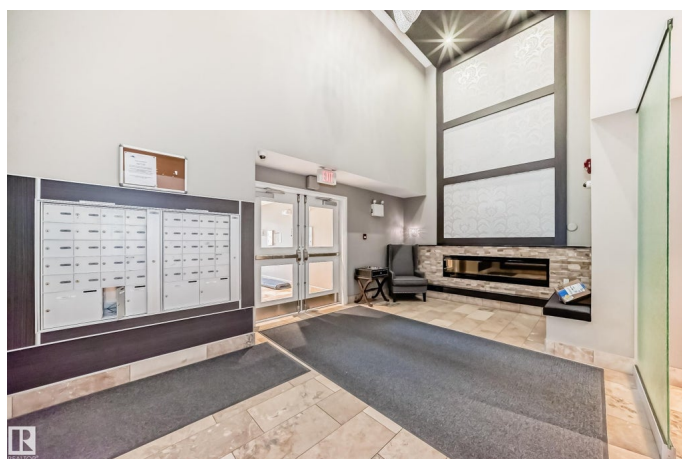
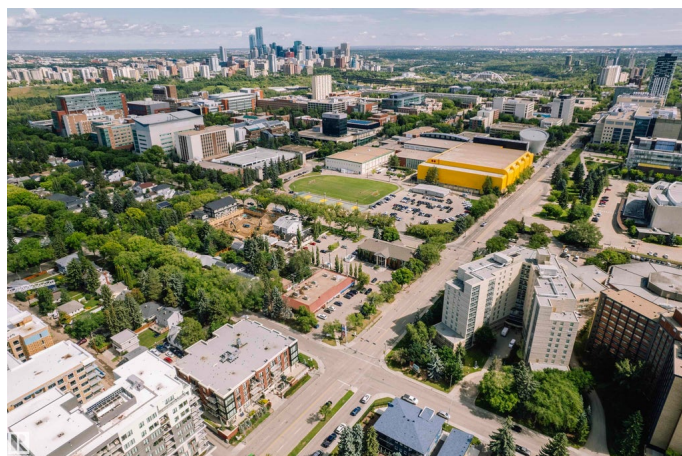
Welcome to this luxury building that has superior finishing throughout. The Bentley condominium complex is located in the beautiful Windsor Park neighborhood. This building consists of concrete and steel construction, built in 2016. This unit has 2 BEDROOMS plus a DEN, & 2.5 BATHROOMS. The primary bedroom has a 5 piece ensuite that has, LED lighting, large vanity and a spa like feel. The second bedroom is large in size with its own 4 piece ensuite. The main floor has a open floor plan with a modern style kitchen and cabinetry, quartz countertops throughout, stainless high end appliances, dining room, and a large family room with fireplace and door to the good size balcony. There is private in suite laundry, and 2 piece bathroom off the large den/flex space. The sale includes 1 secured underground titled parking stall with storage cage. This unit has been freshly paint. The location is walking distance to Whyte Ave, University of Alberta, LRT station, U of A hospital, River Valley and the Jubilee Auditorium.

Built in 2016

Essential Information

MLS® # E4454466

Price \$649,000



Bedrooms	2
Bathrooms	2.50
Full Baths	2
Half Baths	1
Square Footage	1,313
Acres	0.00
Year Built	2016
Type	Condo / Townhouse
Sub-Type	Lowrise Apartment
Style	Single Level Apartment
Status	Active

Community Information

Address	N/A
Area	Edmonton
Subdivision	Windsor Park (Edmonton)
City	Edmonton
County	ALBERTA
Province	AB
Postal Code	T6G 0Y3

Amenities

Amenities	Air Conditioner, Deck, No Smoking Home, Parking-Visitor
Parking	Heated, Underground

Interior

Interior Features	ensuite bathroom
Appliances	Air Conditioning-Central, Dishwasher-Built-In, Hood Fan, Oven-Built-In, Oven-Microwave, Refrigerator, Stacked Washer/Dryer, Stove-Countertop Electric
Heating	Heat Pump, Natural Gas
# of Stories	4
Stories	1
Has Basement	Yes
Basement	None, No Basement

Exterior

Exterior	Steel, Brick, Stone
Exterior Features	Landscaped, Low Maintenance Landscape, Public Transportation,

	Schools, Shopping Nearby
Roof	SBS Roofing System
Construction	Steel, Brick, Stone
Foundation	Concrete Perimeter

Additional Information

Date Listed	August 23rd, 2025
Days on Market	1
Zoning	Zone 15
Condo Fee	\$738

DATA IS DEEMED RELIABLE BUT IS NOT GUARANTEED ACCURATE BY THE REALTORS® ASSOCIATION OF EDMONTON. COPYRIGHT 2025 BY THE REALTORS® ASSOCIATION OF EDMONTON. ALL RIGHTS RESERVED. Trademarks are owned or controlled by the Canadian Real Estate Association (CREA) and identify real estate professionals who are members of CREA (REALTOR®, REALTORS®) and/or the quality of services they provide (MLS®, Multiple Listing Service®)

Listing information last updated on August 24th, 2025 at 8:32am MDT