

\$575,000 - 1154 Goldfinch Crescent, Edmonton

MLS® #E4454504

\$575,000

4 Bedroom, 3.50 Bathroom, 1,769 sqft

Single Family on 0.00 Acres

Kinglet Gardens, Edmonton, AB

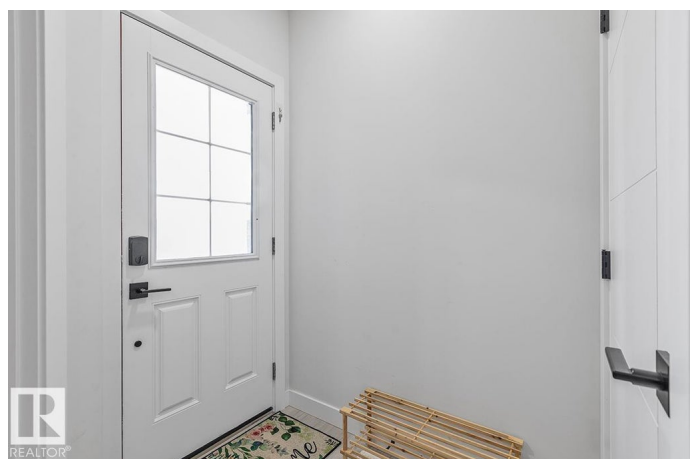
This stunning half-duplex by Blackstone Homes offers 1,770 sqft of modern living with a legal 1-bedroom basement suite - perfect for extended family or rental income. The main floor features an open concept layout with 9'™ ceilings, a spacious great room with linear fireplace, a stylish dining area with coffered ceiling, and a gourmet kitchen complete with quartz countertops, ceiling-height cabinetry, walk-through pantry, and upgraded fixtures. As an added bonus on the main floor, you get a convenient den which can be used as an office or guest room! Upstairs you'll find 3 generous-sized bedrooms, including a luxurious primary suite with a 4-piece ensuite (dual sinks and glass shower) and a large walk-in closet. A bonus room, full bath, and upper-floor laundry add function and convenience to the second floor. The legal basement suite offers a private side entrance, full kitchen with quartz counters, in-suite laundry, living space, and bedroom - an excellent mortgage helper or investment opportunity.

Built in 2023

Essential Information

MLS® # E4454504

Price \$575,000



Bedrooms	4
Bathrooms	3.50
Full Baths	3
Half Baths	1
Square Footage	1,769
Acres	0.00
Year Built	2023
Type	Single Family
Sub-Type	Half Duplex
Style	2 Storey
Status	Active

Community Information

Address	1154 Goldfinch Crescent
Area	Edmonton
Subdivision	Kinglet Gardens
City	Edmonton
County	ALBERTA
Province	AB
Postal Code	T5S 0R1

Amenities

Amenities	Detectors Smoke, Hot Water Natural Gas, No Animal Home, No Smoking Home
Parking	Double Garage Attached

Interior

Interior Features	ensuite bathroom
Appliances	Dishwasher-Built-In, Garage Control, Garage Opener, Microwave Hood Fan, Oven-Built-In, Window Coverings, Dryer-Two, Refrigerators-Two, Stoves-Two, Washers-Two, Dishwasher-Two, Microwave Hood Fan-Two, Oven Built-In-Two, TV Wall Mount, Curtains and Blinds
Heating	Forced Air-1, Forced Air-2, Natural Gas
Stories	3
Has Suite	Yes
Has Basement	Yes
Basement	Full, Finished

Exterior

Exterior	Wood, Brick, Vinyl
Exterior Features	Fenced, Flat Site, Fruit Trees/Shrubs, Landscaped, Playground Nearby, Public Transportation, Shopping Nearby
Roof	Asphalt Shingles
Construction	Wood, Brick, Vinyl
Foundation	Concrete Perimeter

School Information

Elementary	Annunciation, Winterburn
Middle	Thomas More, Michael Phair
High	Francis Xavier, Jasper Pl

Additional Information

Date Listed	August 23rd, 2025
Days on Market	1
Zoning	Zone 59
HOA Fees	1
HOA Fees Freq.	Annually

DATA IS DEEMED RELIABLE BUT IS NOT GUARANTEED ACCURATE BY THE REALTORS® ASSOCIATION OF EDMONTON. COPYRIGHT 2025 BY THE REALTORS® ASSOCIATION OF EDMONTON. ALL RIGHTS RESERVED. Trademarks are owned or controlled by the Canadian Real Estate Association (CREA) and identify real estate professionals who are members of CREA (REALTOR®, REALTORS®) and/or the quality of services they provide (MLS®, Multiple Listing Service®)

Listing information last updated on August 24th, 2025 at 8:17am MDT