

Courtesy Of Sanam Aujla Of Century 21 Smart Realty

\$559,999 - 8125 84 Avenue, Edmonton

MLS® #E4459776

\$559,999

5 Bedroom, 2.00 Bathroom, 1,055 sqft
Single Family on 0.00 Acres

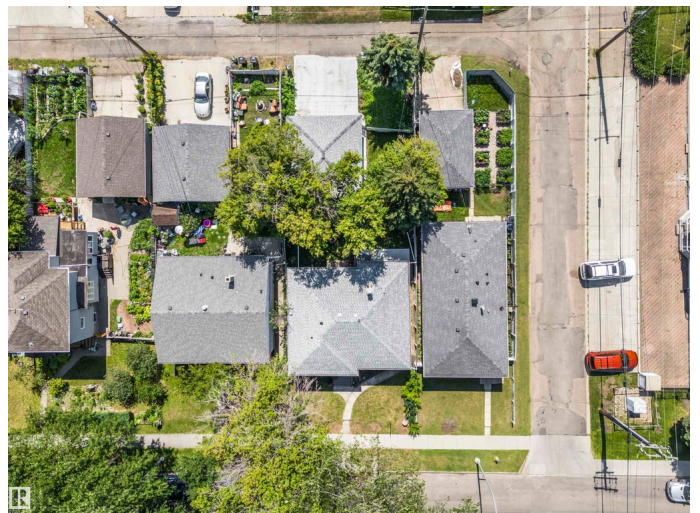
Idylwylde, Edmonton, AB

Welcome to this beautifully FULLY RENOVATED raised bungalow, just steps from Bonnie Doon Mall and LRT Station, in the heart of Idylwylde – a vibrant and growing community perfect for families! This spacious and sun-filled home sits on a 44x120ft lot and offers incredible versatility for living. The main floor boasts a bright and functional layout with large windows, separate living and dining areas, a modern kitchen, brand new SS appliances, new full bathroom, and 3 generously sized bedrooms, including a primary bedroom. Downstairs, the FULLY FINISHED BASEMENT with SEPARATE ENTRANCE is ideal for extended family living. It includes a brand new second kitchen with full appliances, 2 more bedrooms (each with closets), 3rd room size den/office, a new full bathroom, utility room, and a rec room – all designed for comfort and space. To top it off, enjoy the convenience of a huge detached double garage and extra parking pad, new fence, new concrete and plenty of room to relax or entertain both.

Built in 1956

Essential Information

MLS® #	E4459776
Price	\$559,999



Bedrooms	5
Bathrooms	2.00
Full Baths	2
Square Footage	1,055
Acres	0.00
Year Built	1956
Type	Single Family
Sub-Type	Detached Single Family
Style	Raised Bungalow
Status	Active

Community Information

Address	8125 84 Avenue
Area	Edmonton
Subdivision	Idylwylde
City	Edmonton
County	ALBERTA
Province	AB
Postal Code	T6C 1C7

Amenities

Amenities	Detectors Smoke
Parking	Double Garage Detached

Interior

Appliances	Dishwasher-Built-In, Dryer, Washer, Refrigerators-Two, Stoves-Two
Heating	Forced Air-2, Natural Gas
Stories	2
Has Suite	Yes
Has Basement	Yes
Basement	Full, Finished

Exterior

Exterior	Wood, Stone, Stucco
Exterior Features	Back Lane, Fenced, Playground Nearby, Public Swimming Pool, Public Transportation, Schools, Shopping Nearby
Roof	Asphalt Shingles
Construction	Wood, Stone, Stucco
Foundation	Concrete Perimeter

Additional Information

Date Listed September 26th, 2025

Days on Market 33

Zoning Zone 18

DATA IS DEEMED RELIABLE BUT IS NOT GUARANTEED ACCURATE BY THE REALTORS® ASSOCIATION OF EDMONTON. COPYRIGHT 2025 BY THE REALTORS® ASSOCIATION OF EDMONTON. ALL RIGHTS RESERVED. Trademarks are owned or controlled by the Canadian Real Estate Association (CREA) and identify real estate professionals who are members of CREA (REALTOR®, REALTORS®) and/or the quality of services they provide (MLS®, Multiple Listing Service®)

Listing information last updated on October 29th, 2025 at 12:17pm MDT