

Courtesy Of Ram S Virk Of Century 21 Leading

\$255,000 - 105 271 Charlotte Way, Sherwood Park

MLS® #E4461060

\$255,000

2 Bedroom, 2.00 Bathroom, 1,101 sqft
Condo / Townhouse on 0.00 Acres

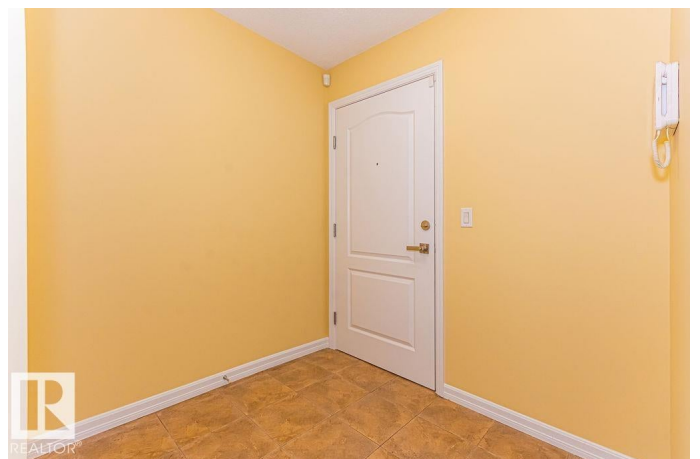
Lakeland Ridge, Sherwood Park, AB

Welcome to Windsore Park! This Gorgeous 1100 square foot main floor 2 bathroom, 2 bedroom plus den condo offering an open and very spacious layout. This CORNER UNIT offers ceramic tile and laminate flooring with ample windows and a patio door leading to you own terrace. Open concept living room, dinette and spacious kitchen with granite counter adds the supplements. The large master bedroom has a walk-through closet and 3 piece en-suite and there is a second bedroom with generous closet space. A 4 piece main bathroom and an IN-SUITE LAUNDRY room with a stacked washer/dryer completes the suite. The purchase of this condo includes 2 TITLED PARKING SPACES !!! Waling distance to Superstore and other amenities Sherwood Park has to offer, including shopping, restaurants, parks and walking trails.

Built in 2011

Essential Information

| | |
|----------------|-----------|
| MLS® # | E4461060 |
| Price | \$255,000 |
| Bedrooms | 2 |
| Bathrooms | 2.00 |
| Full Baths | 2 |
| Square Footage | 1,101 |



| | |
|------------|------------------------|
| Acres | 0.00 |
| Year Built | 2011 |
| Type | Condo / Townhouse |
| Sub-Type | Lowrise Apartment |
| Style | Single Level Apartment |
| Status | Active |

Community Information

| | |
|-------------|-----------------------|
| Address | 105 271 Charlotte Way |
| Area | Sherwood Park |
| Subdivision | Lakeland Ridge |
| City | Sherwood Park |
| County | ALBERTA |
| Province | AB |
| Postal Code | T8H 0N9 |

Amenities

| | |
|-----------|---------------------------------------------------------------------|
| Amenities | Exercise Room, Parking-Visitor, Patio, Security Door, Vinyl Windows |
| Parking | 2 Outdoor Stalls, Parking Pad Cement/Paved, See Remarks |

Interior

| | |
|-------------------|------------------------------------------------------------------|
| Interior Features | ensuite bathroom |
| Appliances | Dishwasher-Built-In, Dryer, Refrigerator, Stove-Electric, Washer |
| Heating | Hot Water, Natural Gas |
| # of Stories | 4 |
| Stories | 1 |
| Has Basement | Yes |
| Basement | None, No Basement |

Exterior

| | |
|-------------------|---------------------------------------------------------------------------------------------------|
| Exterior | Wood, Stone, Vinyl |
| Exterior Features | Flat Site, Landscaped, Low Maintenance Landscape, Picnic Area, Playground Nearby, Shopping Nearby |
| Roof | Asphalt Shingles |
| Construction | Wood, Stone, Vinyl |
| Foundation | Concrete Perimeter |

Additional Information

| | |
|-------------|-------------------|
| Date Listed | October 6th, 2025 |
|-------------|-------------------|

| | |
|----------------|---------|
| Days on Market | 22 |
| Zoning | Zone 25 |
| Condo Fee | \$549 |

DATA IS DEEMED RELIABLE BUT IS NOT GUARANTEED ACCURATE BY THE REALTORS® ASSOCIATION OF EDMONTON. COPYRIGHT 2025 BY THE REALTORS® ASSOCIATION OF EDMONTON. ALL RIGHTS RESERVED. Trademarks are owned or controlled by the Canadian Real Estate Association (CREA) and identify real estate professionals who are members of CREA (REALTOR®, REALTORS®) and/or the quality of services they provide (MLS®, Multiple Listing Service®)

Listing information last updated on October 28th, 2025 at 7:47am MDT