

\$549,900 - 3411 8 Street, Edmonton

MLS® #E4462881

\$549,900

3 Bedroom, 2.50 Bathroom, 1,625 sqft
Single Family on 0.00 Acres

Maple Crest, Edmonton, AB

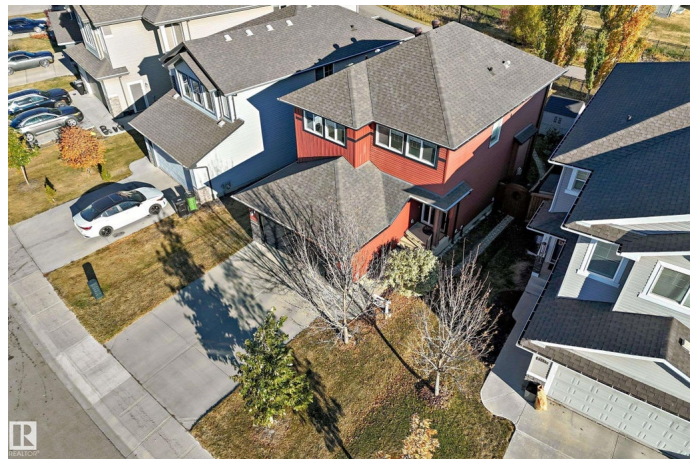
Your Dreams Come True, Quality, Elegance,
So Many Upgrades, Move in Condition !!!
Amazing Location east facing treed back yard
backing onto walk way green reserve only
minute walk to ravines, ponds, playground
This home and property show 12 out of 10.
Immaculate & Upgraded - Truly a Chefs
Kitchen, beautiful granite island w sink,
gorgeous stainless steel appliances, oversized
premium gas stove, instant boiling water tap,
soft close cappucino cabinets and drawers,
garbuartor, walk in pantry, abundance of
counter space in a perfect open spacious main
floor 9 foot ceiling Great Room Concept
opening to a generous 16 by 16 foot raised
deck w gas line in a mature treed setting
excellent for the Best family + Great
entertaining Lifestyle. Be prepared to be
impressed by the designer finishing throughout
providing everyday feeling of living in high end
resort luxury. A lavish primary bedroom with
spa ensuite, Fantastic 2nd storey Bonus Room
along w 2 more bdrms makes perfection. So
Much More, Must View !!!

Built in 2016

Essential Information

MLS® # E4462881

Price \$549,900



Bedrooms	3
Bathrooms	2.50
Full Baths	2
Half Baths	1
Square Footage	1,625
Acres	0.00
Year Built	2016
Type	Single Family
Sub-Type	Detached Single Family
Style	2 Storey
Status	Active

Community Information

Address	3411 8 Street
Area	Edmonton
Subdivision	Maple Crest
City	Edmonton
County	ALBERTA
Province	AB
Postal Code	T6T 1A3

Amenities

Amenities	On Street Parking, Ceiling 9 ft., Closet Organizers, Deck, Detectors Smoke, Hot Water Tankless, No Animal Home, No Smoking Home, Vaulted Ceiling, Vinyl Windows, See Remarks, 9 ft. Basement Ceiling
Parking Spaces	4
Parking	Double Garage Attached, Front Drive Access, Heated, Insulated

Interior

Interior Features	ensuite bathroom
Appliances	Dishwasher-Built-In, Dryer, Garage Control, Garage Opener, Hood Fan, Storage Shed, Stove-Gas, Washer, Water Softener, Window Coverings, See Remarks
Heating	Forced Air-1, Natural Gas
Fireplace	Yes
Fireplaces	Mantel
Stories	2
Has Basement	Yes
Basement	Full, Unfinished

Exterior

Exterior	Wood, Stone, Vinyl
Exterior Features	Backs Onto Park/Trees, Fenced, Fruit Trees/Shrubs, Landscaped, Park/Reserve, Playground Nearby, Public Swimming Pool, Public Transportation, Recreation Use, Schools, Shopping Nearby, Treed Lot, See Remarks
Roof	Asphalt Shingles
Construction	Wood, Stone, Vinyl
Foundation	Concrete Perimeter

Additional Information

Date Listed	October 20th, 2025
Days on Market	12
Zoning	Zone 30

DATA IS DEEMED RELIABLE BUT IS NOT GUARANTEED ACCURATE BY THE REALTORS® ASSOCIATION OF EDMONTON. COPYRIGHT 2025 BY THE REALTORS® ASSOCIATION OF EDMONTON. ALL RIGHTS RESERVED. Trademarks are owned or controlled by the Canadian Real Estate Association (CREA) and identify real estate professionals who are members of CREA (REALTOR®, REALTORS®) and/or the quality of services they provide (MLS®, Multiple Listing Service®)

Listing information last updated on November 1st, 2025 at 11:02am MDT